

Ferrell-Ross 18 x 12 Feed Laboratory Flaking Mill



This 18 x 12 Laboratory Feed Flaking Mill is designed to be the ideal mill for today's foundation sized or laboratory steam flaking processes (up to 2 tons per hour). This smaller sized mill is designed very similar to the heavy-duty design of our large flaking mills.

The 18 x 12 Feed Flaking Mill comes standard with high quality chilled cast iron rolls and aluminum saddles. The standard 3.5" journals come with double row self-aligning spherical bearings enclosed in custom Ferrell-Ross cast iron bearing housings.

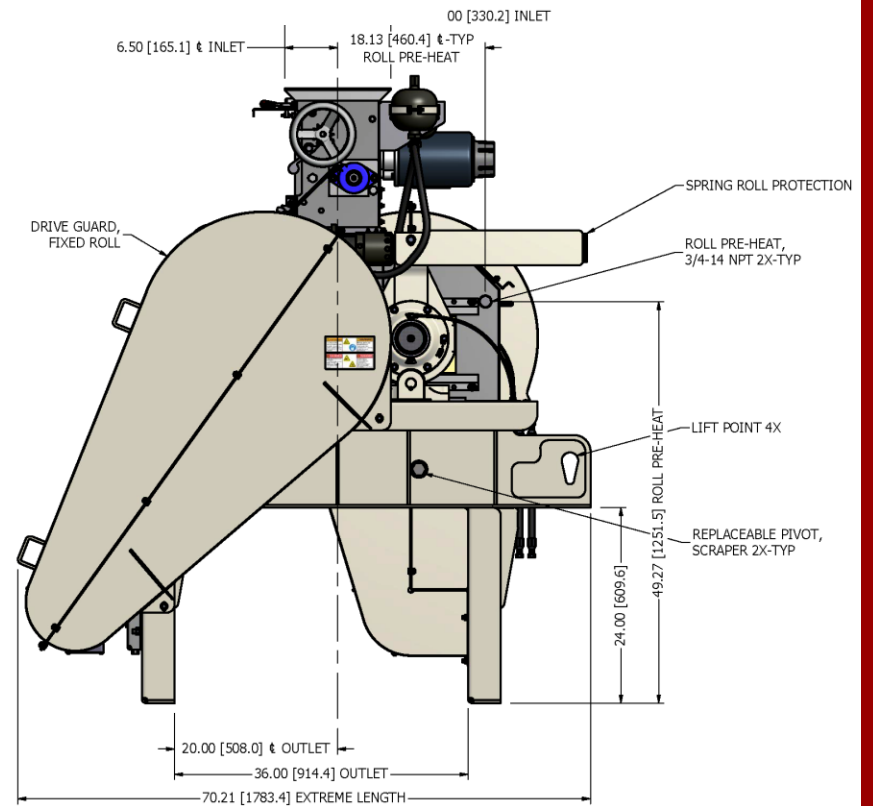
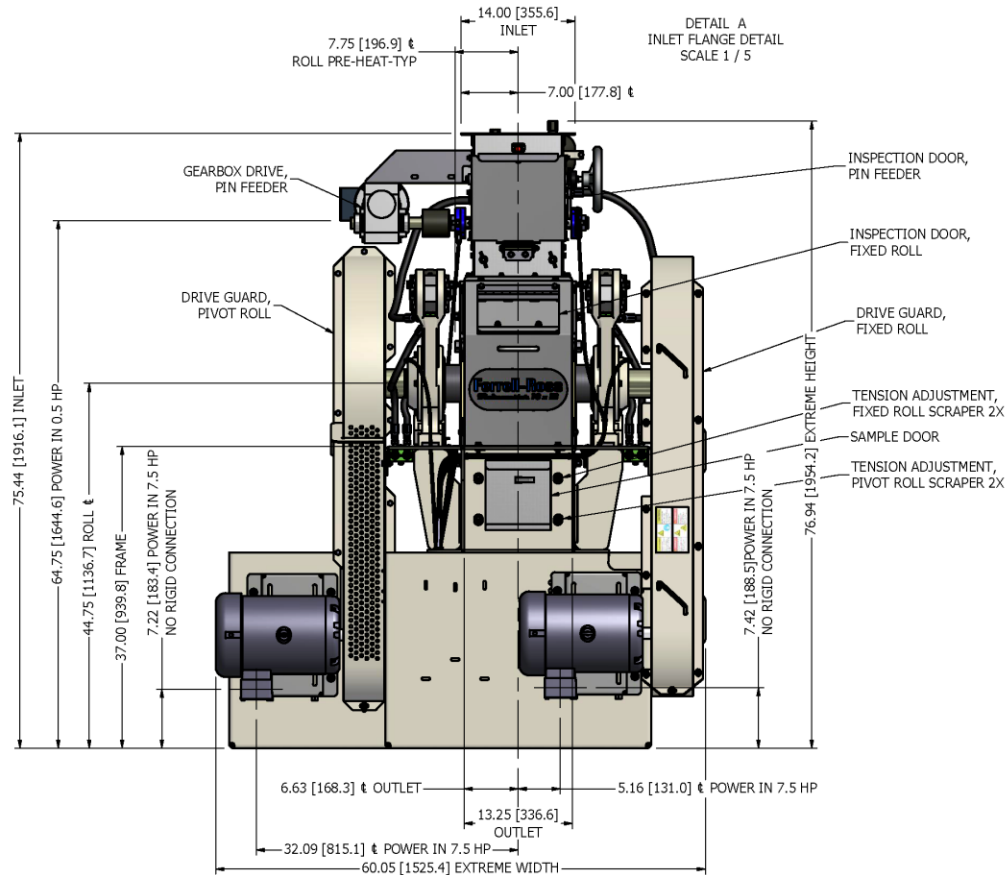
STANDARD FEATURES INCLUDE:

- Two Cast Chilled Iron Rolls
- Heavy Duty Mill Base with 24" Legs and Epoxy White Paint
- Stainless Steel Housing Covers & Center Section
- Roll Removal from the Front or Back of Mill
- Heavy-Duty Springs with Hydraulic Accumulator Protection
- Hydraulic Pump with Control
- Stainless Steel Scraper Assembly with Aluminum Blades
- Dual Drive Package with two (2) 7.5HP Motors
- 1 to 1 Differential
- Stainless Steel Pin Feeder
- Variable Speed Pin Feeder Control
- Convenient Roll Gap Adjustment System
- Central Grease Package

OPTIONS INCLUDE:

- 7.5 HP Inverter Duty Motors & Inverters for Applications Requiring Multiple Roll Speeds and or Differential Speeds
- Micro Hand Wheel Roll Adjustment





DRAWING NOTES

1. DO NOT SCALE FROM DRAWING.
2. SHIPPING WEIGHT 4,400 LBS/1996 KG.
3. ALTERNATIVE UNITS (X.XX) IN MILLIMETERS
4. FIXED & PIVOT ROLL ASSEMBLIES MAY BOTH BE PULLED FROM THE FRONT OR REAR OF THE HOUSING.
5. HYDRAULIC CONNECTIONS # 6 (9/16-18) SAE 37 (J.I.C) FLARE FITTING TUBE. MAXIMUM RECOMMENDED HYDRAULIC PRESSURE; 1800 PSI/126.6 KSC.
6. ROLL PREHEAT STEAM OPERATING PRESSURE; 15 PSI (1.1 kg/sq cm). MAXIMUM RECOMMENDED STEAM PRESSURE 50 PSI (3.5 kg/sq cm)
7. TWO #6 X 120" (3048) LONG HYDRAULIC HOSES INCLUDED WITH MILL T60 CONNECT PUMP TO MILL
8. MILL BASE ASTM A36 PAINTED FINSH. MILL HOUSING ASTM A240, A276,A312 T304 SS RANDOM ORBIT POLISHED EXTERNAL FINISH
9. RECOMMENDED MAINTENANCE CLEARANCE FROM MILL BASE: 48.00" (1219) AT FRONT & SIDES, 12.00" (305) AT REAR.
10. SEE SHEET 2 FOR MOTOR POWER INPUT, OUTLET, MOUNTING AND STEAM VENT DETAILS.
11. SEE SHEET 3 FOR OPTIONAL STEAM VENT DETAIL



1440 SOUTH ADAMS STREET, BLUFFTON, IN 46714 USA (260) 824-3400 (800) 248-8318 FAX (260) 824-5463

atferrell.com/ferrell-ross

info@atferrell.com