

# Ferrell-Ross 18 x 36 Flake Master



The 18 x 36 Flake Master Flaking Mill is designed to be the ideal mill for today's flaking industry. Smaller than the 24" mill, but still designed with the same heavy-duty ship channel construction. The 18 x 36 is designed with easily removed panels. This allows for trouble free routine cleaning and roll changes. The 304 Stainless Steel housing prevents the build up of corrosion.

## Options Include:

- Epoxy Paint
- High Capacity Feeder
- 24" Legs
- Micro Hand Wheel for Infinite Roll Adjustment
- Manual Control Panel
- Touch Screen Control Panel

The 18 x 36 comes standard with high quality chill cast iron rolls and custom aluminum saddles. Saddles are also available in nylon or stainless steel. The standard 4 15/16" journals come with double row self-aligning spherical bearings incased in custom Ferrell-Ross cast iron bearing housings.

## Other Standard Features Include:

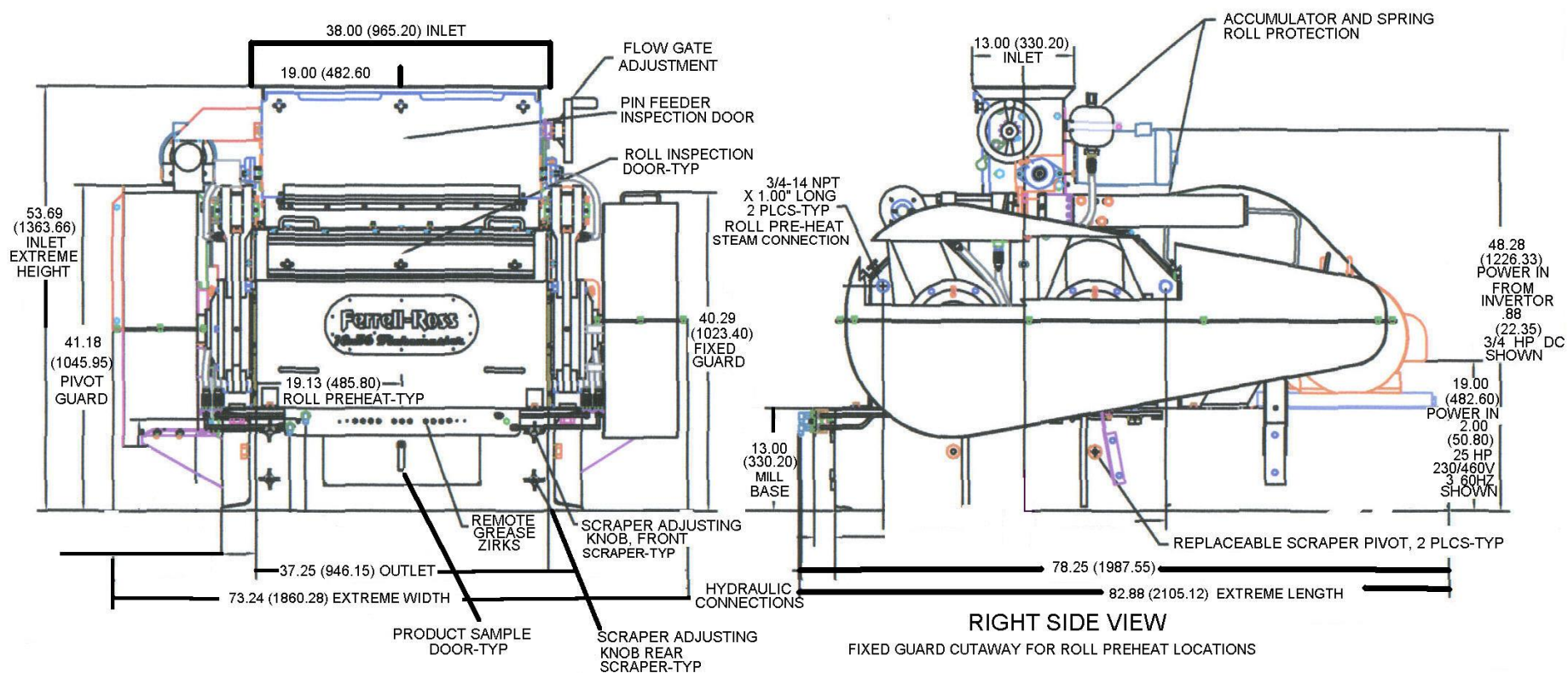
- Dual Drive Package
- Stainless Steel Roll Covers, & Center Section
- Heavy-Duty Spring with Hydraulic Accumulator Protection
- Hydraulic Pump with Control
- Stainless Steel Pin Feeder with Slide Gate
- AC Variable Speed Feeder Control with Gearbox.
- Convenient Roll Gap Adjustment System
- Roll Preheat System
- Roll Removal from the Front or Back



1440 SOUTH ADAMS STREET, BLUFFTON, IN 46714 USA (260) 824-3400 (800) 248-8318 FAX (260) 824-5463

[atferrell.com/ferrell-ross](http://atferrell.com/ferrell-ross)

[info@atferrell.com](mailto:info@atferrell.com)



4. FIXED & PIVOT ROLL ASSEMBLIES MAY BOTH BE PULLED FROM THE FRONT OR REAR OF THE HOUSING.
5. HYDRAULIC CONNECTIONS # 6 (9/16-18) SAE 37 (J.I.C) FLARE FITTING TUBE. MAXIMUM RECOMMENDED HYDRAULIC PRESSURE; 1800 PSI/126.55 KSC.
6. ROLL PREHEAT STEAM OPERATING PRESSURE; 15 PSI (1.05 kg/sq cm). MAXIMUM RECOMMENDED STEAM PRESSURE 50 PSI (3.52 kg/sq cm)
7. TWO #6 X 120" (3048) LONG HYDRAULIC HOSES INCLUDED WITH MILL T60 CONNECT PUMP TO MILL
8. MILL BASE ASTM A36 MC13X50 PAINTED FINSH. MILL HOUSING ASTM A240, A276,A312 T304 SS # 3 POLISHED EXTERNAL FINISH
9. ALTERNATIVE UNITS (X.XX) IN MILLIMETERS



1440 SOUTH ADAMS STREET, BLUFFTON, IN 46714 USA (260) 824-3400 (800) 248-8318 FAX (260) 824-5463  
[atferrell.com/ferrell-ross](http://atferrell.com/ferrell-ross) [info@atferrell.com](mailto:info@atferrell.com)