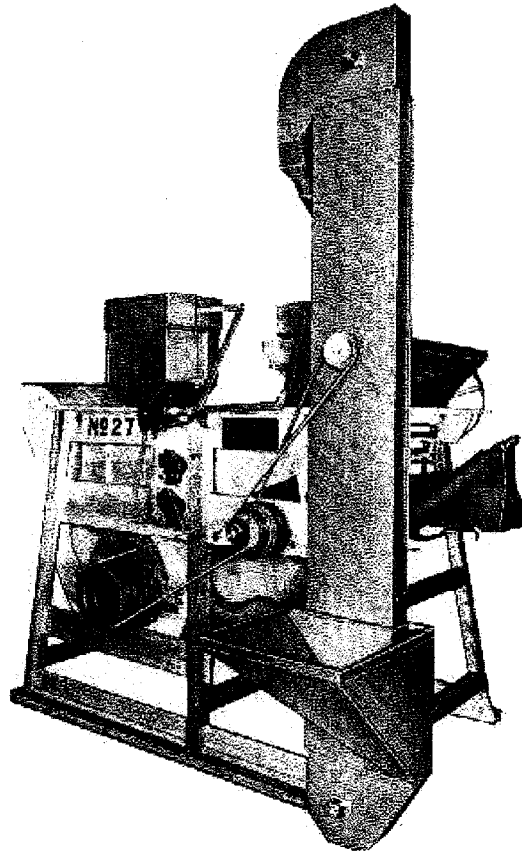


# NO. 27 FARM SIZE CLEANER

Can be equipped with a self-contained slurry treater as shown



## CLIPPER FARM SIZE CLEANER No. 27

Clipper No. 27 with treater, vertical elevator,  
bagging auger, control feed hopper and sink hopper.

Clean • Treat • Elevate • Rough scalp up to 100 bushels per hour.

All capacities will vary according to area and amount of foreign material in the commodity to be cleaned.

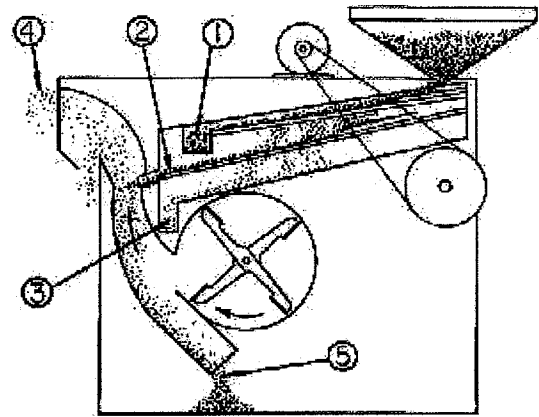
### FARM MODEL SPECIFICATIONS

	No. 27	
	BASIC MACHINE With Roll Feed Hopper	COMPLETE AS SHOWN
Screen Size	34" x 42"	34" x 42"
No. Screens in Cleaner	2	2
No. Screens Furnished	6	6
Extreme Height	71"	102"
Extreme Length	74"	87"
Extreme Width	48"	66"
Horsepower Required	1	1
Shipping Weight (lbs.) Including Guards	1020	1250

Width specifications listed above do not include dimensions for modular guards. A complete list of attachment kits with current prices and approximate shipping weights.

## COMMODITY FLOW

The commodity is fed to the hopper which spreads it evenly across the full width of the top screen. The top screen perforation is selected with openings larger than the product being cleaned to scalp off large foreign material 1) while the good commodity falls through. The bottom screen is selected with openings smaller than the commodity being cleaned, passing the good product over this second screen. 2) Trash, weed seeds and splits drop through. 3) After screening, the product is routed through the air column of the bottom blast fan to remove any remaining lightweight trash and dust 4) that was missed during the process. This air separation is very selective. The fan speed is controlled by means of a 3-step pulley arrangement and adjustable air intake slides provide for intermediate settings. Good, clean product is discharged. 5)



bushels per hour when rough scalping. If the machine is used for cleaning certified seed, it must be equipped with top screen brushes as well as the furnished bottom brushes. This cleaner has been suitably used for foundation seed work at lesser capacities. When the No. 27 is equipped as illustrated. It becomes a self-contained unit and lends itself for use as a portable installation. This cleaner is especially good for seasonal work. It can be easily moved aside when not in use ... a feature not possible with a permanent installation.

## TREATING

The No. 27 can be equipped with a self-contained slurry treater. The slurry heater is simply a dispensing unit. It meters wettable powder or liquid treating agents by means of a piston driven from a rotating shaft in the hopper. A rubber hose routes the liquid to the lower end of the bagging or wagon box auger where the actual mixing of the seed and the liquid takes place. An auger is mandatory when treating.

## ELEVATING

The bagging auger elevates to a convenient sack height. A 14-foot auger with adapter and drive is available to elevate the cleaned-treated commodity to truck bed, wagon box or bin. It is driven from the cleaner and discharges at a height of 8 feet. When a 14-foot auger is used on a No. 27, two piece screens must be used in the cleaner.

## No. 27 FEATURES

The all hardwood constructed No.27 is a quality machine. Bottom screen cleaning brushes are standard equipment ... top screen brushes are optional. The product being cleaned and the bottom screen opening are close to the same size, necessitating brushes to keep the screen free from clogging.

The No. 27 is big enough for small scale commercial operations, supplying up to 100

Two piece screens ...essential when a 14-foot auger is used...can be supplied upon request. In difficult and compound separations, these screens can be made using one perforation on the upper half and another one on the lower section. Special hoppers are available to handle certain commodities. A variable speed fan drive can be supplied at additional cost in place of the 3 step pulleys, permitting air adjustments to be made while the cleaner is in operation.

## COMMON FEATURES

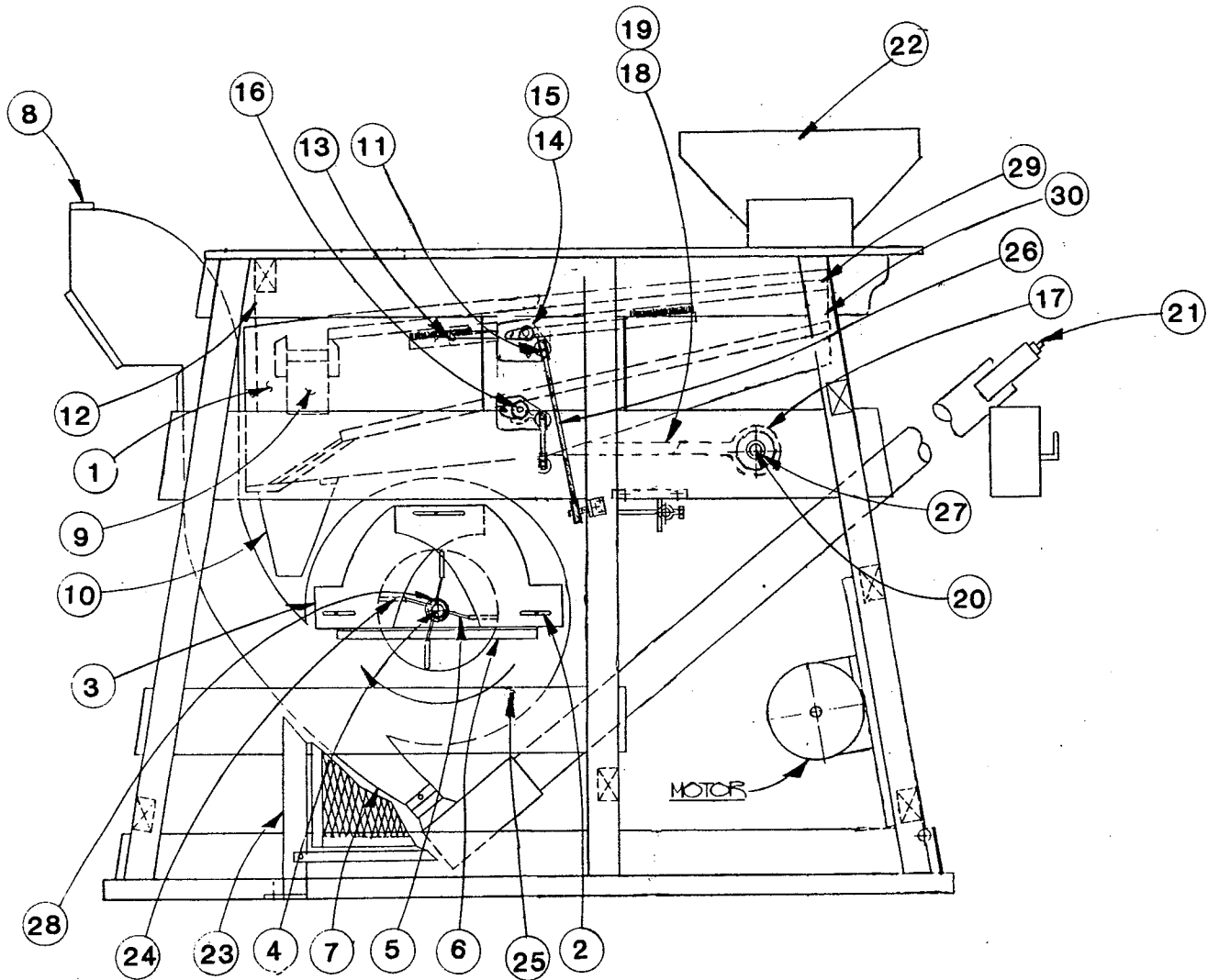
The brushes on this cleaner are adjustable and the screens can be quickly pulled and replaced. Over 200 different screen sizes are available in perforated metal and wire cloth for all cleaning/grading requirements.

Modular guards are included on this cleaner as standard equipment to meet more stringent requirements for operator protection. They are built in sections of expanded metal ... construction enables easy access for making adjustments to the cleaner and commodity sampling.



SINCE 1869

# Clipper® #27 WOODEN CLEANER



## DRIVE INFORMATION

<u>Part Number</u>	<u>Qty.</u>	<u>Description</u>
F013 03402	1	BK 4.0 Motor Sheave 7/8"
F013 01800	1	BK 16.0 Eccentric Shaft Sheave 1-3/16"
450 02078	1	B75 Eccentric Shaft Drive Belt
F013 01200	1	BK 4.0 Brush Unit Drive Sheave 1-3/16"
F013 00010	1	BK 8.0 Brush Unit Driven Sheave 3/4"
F911 75360	1	5L360 Brush Unit Drive Belt
F917 60175	1	Hopper Drive Die Cast "A" Pulley
F911 74820	1	4L820 Hopper Drive Belt
F013 08300	2	3 Step V-Pulley Fan Drive
F911 74710	1	4L710 Bottom Fan Belt
F019 07200	1	Flat Fan Belt for Flat 3-Step Pulleys (Flat Pulleys are not Available)

# Clipper® #27 WOODEN CLEANER

<u>No.</u>	<u>Part Number</u>	<u>Qty.</u>	<u>Description</u>
1	F030 03100	1	Shoe Assembly
2	F900 05012	2	Fan Slide Assembly RH
3	F900 05010	2	Fan Slide Assembly LH
4	F016 06500	1	Fan Shaft
5	F060 01600	2	Fan Arms
6	F063 00400	2	Bridgetree Angle
7	F080 00900	1	Grain Discharge Spout Ass'y
8	F065 00000	1	Back Hood Assembly
9	F083 01900	1	Straw Spout
10	F080 00600	1	Sand Spout
11	F010 00200*	4	Rope Sheave Assembly
12	F031 13200	2	Back Hanger (Specify RH or LH)
13	F095 00600**	2	Brush Carrier Assembly
14	F010 03002***	2	Brush Adjusting Assembly-Handle Side
15	F010 01901***	2	Brush Adjusting Assembly-Idler Side
16	F016 12107	2	Brush Carrier Shaft 1-3/16"
17	F195 03604	2	Eccentric Assembly
18	F196 04301	1	RH Pitman Arm
19	F196 04302	1	LH Pitman Arm
20	F016 22100	1	Eccentric Shaft
21	F300 11301	1	6' Auger/Bagger Assembly
22	F175 01700	1	Control Feed Hopper Assembly
23	F280 34977	1	Modular Guard Assembly
24	F017 01104	4	Wooden Fan Blades
25	F063 01200	1	Drum Iron
26	F977 00002	10'	Wirelon Cable-10' per Carrier
27	F924 11031	2	Ecc. Shaft Flange Bearing
28	F924 01030	2	Fan Shaft Bearing
29	F035 00800	4	Screen Hook Assembly
30	F030 11000	2	Front Hanger (Specify RH or LH)

\* Rope Sheave Assembly includes:

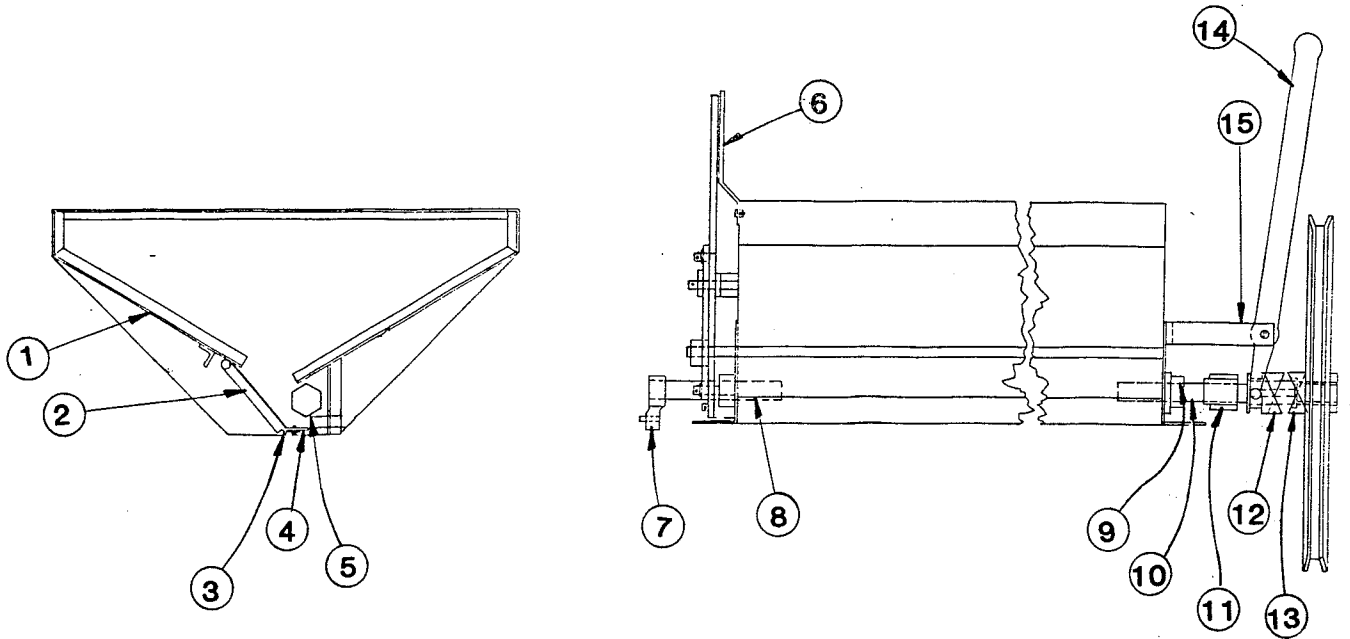
F014 01300	1	Rope Sheave
F018 02401	1	Axle w/Hardware
F011 01500	1	Bracket

\*\* Brush Carrier Assembly includes:

F095 01400	2	Carrier Rollers 1-3/16"
F098 02401	2	Roller Axles w/Hardware
F100 00010	2	Fine Nylon Brushes <u>or</u>
F100 00020	2	Coarse Nylon Brushes <u>or</u>
F100 00600	2	Screen Scrapers

\*\*\* Brush Adjusting Assembly Parts are Available only for Machines with 1-3/16" Carrier Shafts

# Clipper® #27 CONTROL FEED HOPPER



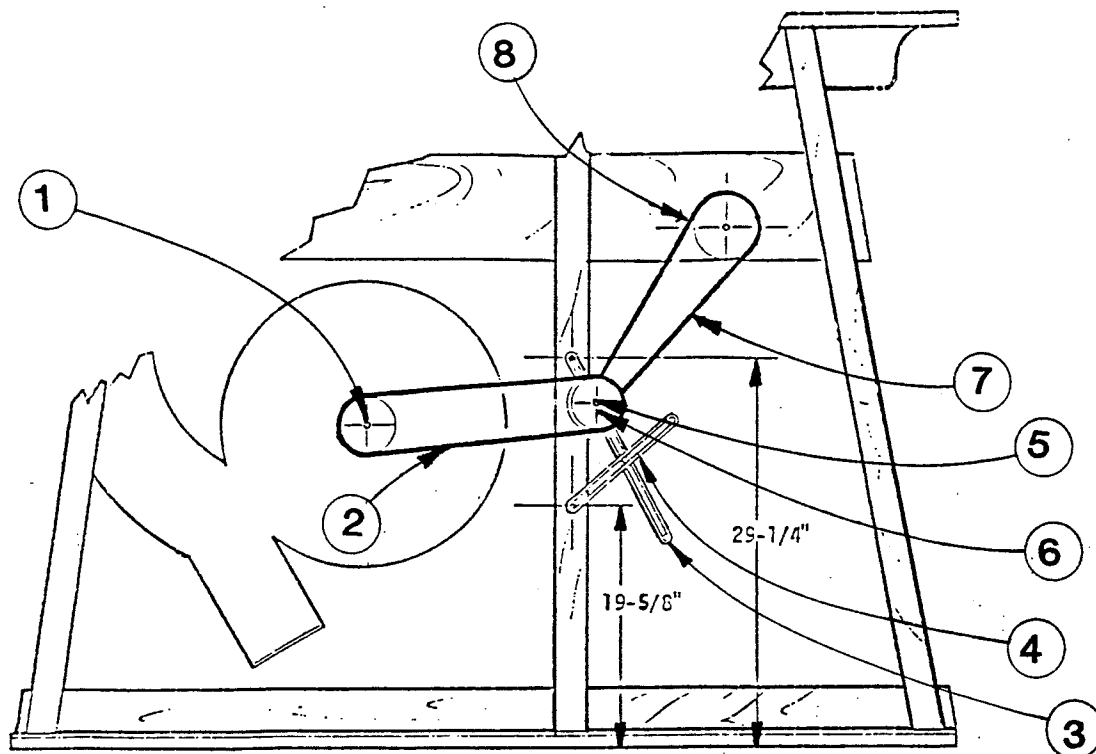
No.	Part Number	Qty.	Description
1	F175 04500	1	Hopper Body
2	F175 01900	1	Hopper Gate
3	F178 08100	1	Hopper Gate Support
4	F178 08000	1	Hopper Gate Rubber
5	F178 07000	1	Hopper Hex Roll
6	F178 07600	1	Indicator Assembly
7	F302 02200	1	Slurry Treater Crank Arm
8	F178 07400	1	Stub Shaft
9	F302 01010	2	Roll Shaft Bearing
10	F178 07300	1	Drive Shaft
11	F011 02110	1	Plain Pillow Block Bearing 13/16"
12	F042 00500	1	RH Hopper Clutch
13	F042 01700	1	RH Hopper Sheave
14	F042 01000	1	Hopper Clutch Lever
15	F178 07200	1	Hopper Clutch Bracket
	F175 01700	1	Complete Control Feed Hopper for #27

Note: For Roll Feed or Brush Hoppers please consult parts listings for hoppers used on commercial cleaners.

# Clipper®

## #27 VARIABLE DRIVE

### "TYPE B"



### PARTS LIST

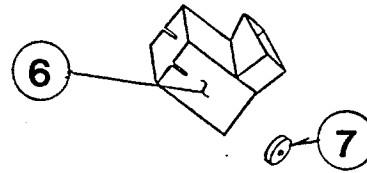
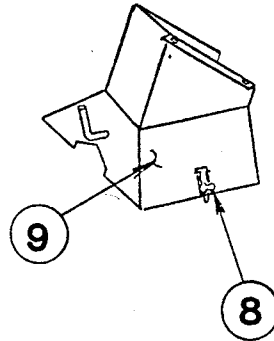
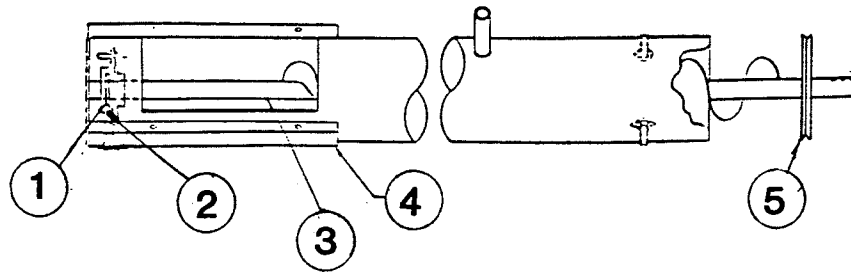
No.	Part Number	Qty.	Description
1	F013 01200	1	4" Sheave 1-3/16"
2	F911 75430	1	3430 Belt
3	F302 01200	1	Variable Air Regular Handle
4	F302 01600	1	Trunion Arm
5	F303 08200*	1	Axle Shaft w/o Bushing
6	F302 01300	1	Variable Sliding Disc
	F302 01400	2	Variable Stationary Disc
7	F911 75430	1	3430 Belt
8	F013 01010	1	5" Sheave 1-3/16"
	F300 05200	1	Complete Variable Drive Assembly
*	F928 20260	1	Bronze Bushing for Axle Shaft 3/4" ID x 1" OD x 3-1/2 Long

### INSTALLATION INSTRUCTIONS

1. Remove old 3-step pulleys from eccentric and fan shafts.
2. Drill 1/2" hole through center support (center 29-1/4" up from bottom of sill).
3. Drill 1/2" hole through center support (center 19-5/8" up from bottom of sill).
4. Attach "Type B" variable and trunion as shown.
5. Install 5" sheave on eccentric shaft, 4" sheave on fan shaft, and belts.
6. V-belts should be snug but not excessively tight.
7. When cleaning light seed such as grass seed, switch positions of 4" & 5" sheaves.

# Clipper®

## #27 AUGER KIT



No.	Part Number	Qty.	Description
1	F302 01010	1	Auger Flange Bearing
2	F011 02002	1	Collar
3	F300 07475	1	Shaft & Flighting
4	F300 07476	1	Welded Tube Assembly
5	F013 03401	1	4" Sheave 3/4" Bore
6	F175 02500	1	Complete Boot Assembly
7	F302 01000	1	3/4" Flange Bearing
8	F010 03100	2	Bag Holder Assembly
9	F300 09100	1	Two Way Bagger Assembly
	F300 11301	1	#27 Complete Auger/Bagger Kit
	F300 07400	1	Auger w/Boot (includes 1-4,7)
	F300 08900*	1	90 Degree Corner Idler Ass'y
	F304 03301	1	144" Open End Drive Belt
	F980 00001	1	Extra Clips for Belt

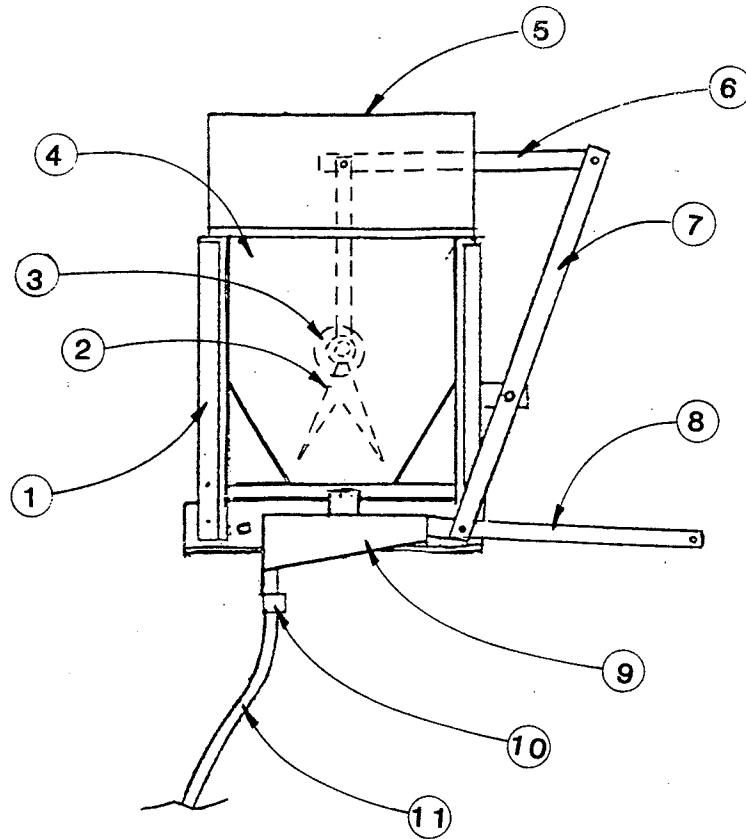
\* Corner Idler Assembly includes:

F031 07709	2	3" Idler Sheaves
F300 08910	1	Bracket
F300 08920	1	Shaft

Note: Other elevator belts which are available for #27 cleaners

F175 00800	1	170" Cleated Elevator Belt for 7' Bagging Elevator
F175 00810	1	281" Cleated Elevator Belt for 14' Bagging Elevator
F175 02900	1	192" Elevator Belt w/50 Buckets for Vertical Elevator

# Clipper® #27 SLURRY TREATER



<u>No.</u>	<u>Part Number</u>	<u>Qty.</u>	<u>Description</u>
1	F175 02100	1	Frame Assembly
2	F175 02200	1	Agitator Assembly
3	F178 05600	2	Treater Bearing
4	F175 02020	1	Tank & Agitator Assembly
5	F178 06000	1	Treater Cover
6	F178 06300	1	Horizontal Agitator Drive Arm
7	F178 08600	1	Vertical Agitator Drive Arm
8	F178 08500	1	Piston Drive Arm
9	F178 05900	1	Treater Spout
10	F178 09300	2	Treater Clamp
11	F179 00500	1	Treater Hose 1/2" x 48"
	F177 00600	1	Cylinder Block
	F178 06200	1	Stainless Steel Cylinder "B"
	F178 06210	1	Stainless Steel Cylinder "D"
	F175 02000	1	#27 Slurry Treater Assembly Complete (Drive Linkage Not Included)