

The Ferrell-Ross Model "M" Roller Mill

For Medium-Duty Particle Reduction



Ferrell-Ross is known worldwide for its heavy-duty industrial roller mills. The Model "M" was developed as a scaled-down version of our industrial mill especially for customers with easy-to-grind products and low tonnage requirements.

Model "M" applications include plastics, spices, nuts, food products, desiccants, various dry chemicals and feed processing.

The Model "M" mill utilizes 10" chilled cast rolls of the same quality as our industrial machines. These provide more surface area at the roll nip and a more controlled particle size.

We will test your product free of charge! Send us a small quantity of your product for lab testing and we will recommend the model and accessories needed to obtain the sizing and capacity you require.

The Model "M" is available as either a single-high with one pair of rolls, or a double reduction two-high with one pair of rolls mounted on top of the other. Either mill is available with a variety of roll corrugations and can be ordered with or without an inlet hopper.

For more information, call our product specialist toll free at 1-800-248-8318.



1440 SOUTH ADAMS STREET, BLUFFTON, IN 46714 USA (260) 824-3400 (800) 248-8318 FAX (260) 824-5463
atferrell.com/ferrell-ross info@atferrell.com

THE FERRELL-ROSS MODEL "M" MILL CAPACITIES

| Roll Size | Motor H.P. Required | | Corrug per in. * | Hi-Moisture (70#/Bu) | | Dry Corn (56#/Bu) | | Milo (56#/Bu) | | Wheat (60#/Bu) | | Oats (37#/Bu) | | Barley (50#/Bu) | | | | | | | | |
|-----------|---------------------|------|---------------------|----------------------|--------|-------------------|--------|---------------|--------|----------------|--------|---------------|--------|-----------------|--------|-----|-----|-----|----|-----|----|-----|
| | Single | 2-Hi | | Bu/Hr | Kg/Min | Bu/Hr | Kg/Min | Bu/Hr | Kg/Min | Bu/Hr | Kg/Min | Bu/Hr | Kg/Min | Bu/Hr | Kg/Min | | | | | | | |
| 10 x 6 | 3 | 7.5 | 5 | 180 | 95 | 200 | 84 | 80 | 34 | 50 | 21 | 60 | 25 | 50 | 21 | | | | | | | |
| | | | 10 | | | 80 | 34 | | | | | | | | | 53 | 22 | 36 | 18 | 36 | | |
| | | | 13 | | | 50 | 21 | | | | | | | | | | | | | | | |
| 10 x 12 | 5 | 10 | 5 | 365 | 193 | 400 | 168 | 160 | 67 | 95 | 40 | 100 | 42 | 95 | 40 | | | | | | | |
| | | | 10 | | | 160 | 67 | | | | | | | | | 130 | 55 | 70 | 25 | 70 | | |
| | | | 13 | | | 100 | 42 | | | | | | | | | | | | | | | |
| 10 x 18 | 7.5 | 15 | 5 | 545 | 288 | 600 | 252 | 240 | 100 | 130 | 55 | 140 | 60 | 130 | 55 | | | | | | | |
| | | | 10 | | | 240 | 100 | | | | | | | | | 200 | 84 | 65 | 85 | 36 | 65 | |
| | | | 13 | | | 150 | 63 | | | | | | | | | | | | | | | |
| 10 x 24 | 10 | 20 | 5 | 730 | 386 | 800 | 336 | 320 | 134 | 175 | 74 | 190 | 80 | 175 | 74 | | | | | | | |
| | | | 10 | | | 320 | 134 | | | | | | | | | 260 | 110 | 90 | 38 | 115 | 48 | 90 |
| | | | 13 | | | 200 | 84 | | | | | | | | | | | | | | | |
| 10 x 30 | 15 | 25 | 5 | 910 | 481 | 1000 | 420 | 400 | 168 | 215 | 90 | 225 | 95 | 215 | 90 | | | | | | | |
| | | | 10 | | | 400 | 168 | | | | | | | | | 320 | 134 | 110 | 46 | 135 | 57 | 110 |
| | | | 13 | | | 250 | 105 | | | | | | | | | | | | | | | |
| 10 x 36 | 20 | 30 | 5 | 1100 | 582 | 1200 | 504 | 480 | 202 | 235 | 100 | 250 | 105 | 235 | 100 | | | | | | | |
| | | | 10 | | | 480 | 202 | | | | | | | | | 390 | 164 | 120 | 51 | 150 | 63 | 120 |
| | | | 13 | | | 300 | 126 | | | | | | | | | | | | | | | |

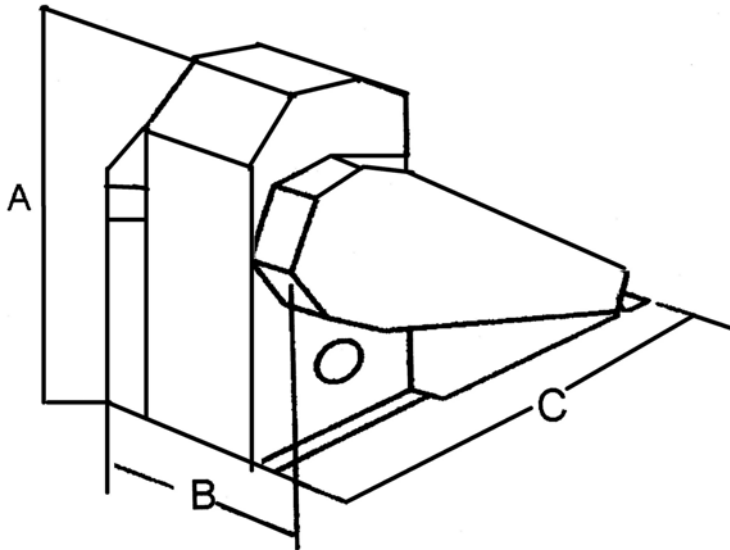
All projected capacities listed are only estimates. The capacity of any roller or flaking mill will vary depending on quality of the Grain, roll spacing (gap), horse power, differential roll speed and the general operation of the mill.

* 5 groove per inch corrugations are normally used for coarse cracking of corn.

10 groove per inch corrugations are normally used for processing a combination of grains on a single pair roller mill.

13 groove per inch corrugations are normally used for processing small grains on a single pair mill and/or double reduction on a 2-Hi mill.

Dimensions (inches)



| | | A | B | C |
|-----------|---------|-------|------|--------|
| 1-Hi Mill | 10 x 6 | 42 | 28.5 | 54.25 |
| | 10 x 12 | 42 | 34.5 | 54.25 |
| | 10 x 18 | 42 | 40.5 | 54.25 |
| | 10 x 24 | 42 | 46.5 | 54.25 |
| | 10 x 30 | 42 | 52.5 | 54.25 |
| | 10 x 36 | 42 | 58.5 | 54.25 |
| 2-Hi-Mill | 10 x 12 | 60.25 | 35.5 | 54 7/8 |
| | 10 x 18 | 60.25 | 41.5 | 54 7/8 |
| | 10 x 24 | 60.25 | 47.5 | 56 7/8 |
| | 10 x 30 | 60.25 | 53.5 | 56 7/8 |
| | 10 x 36 | 60.25 | 59.5 | 56 7/8 |

Model M Roller Mills-Net. Wt.

| ROLL SIZE | 1-HI | 2-HI |
|-----------|---------|---------|
| 10"x6" | 900lbs | -- |
| 10"x12" | 1200lbs | 2200lbs |
| 10"x18" | 1500lbs | 2900lbs |
| 10"x24" | 1800lbs | 3500lbs |
| 10"x30" | 2300lbs | 4200lbs |
| 10"x36" | 2500lbs | 4900lbs |

