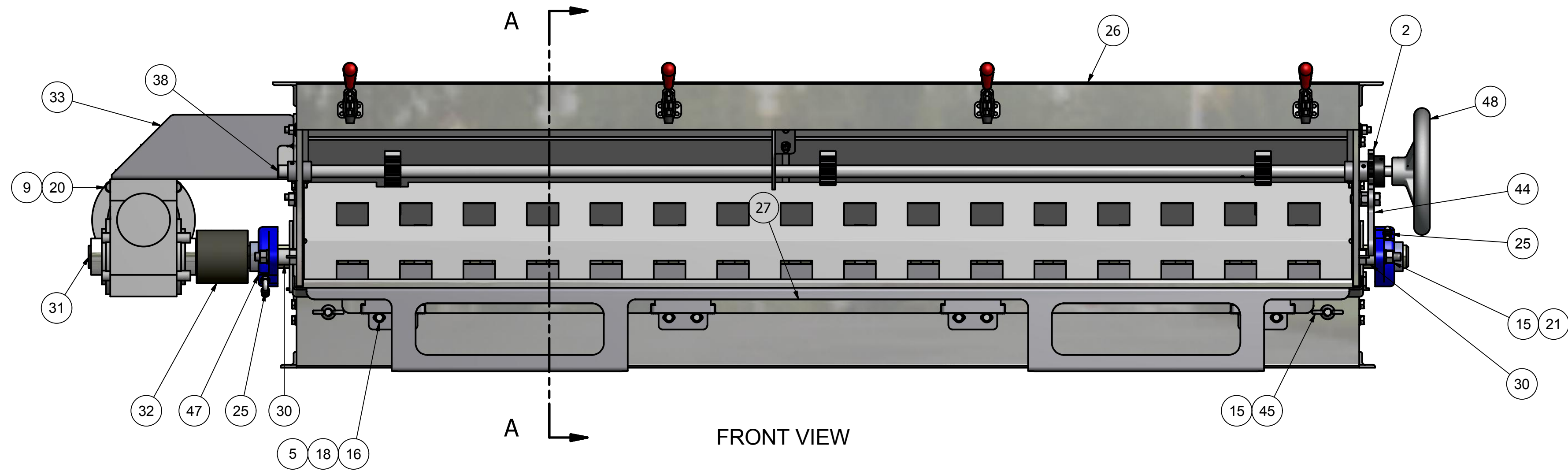
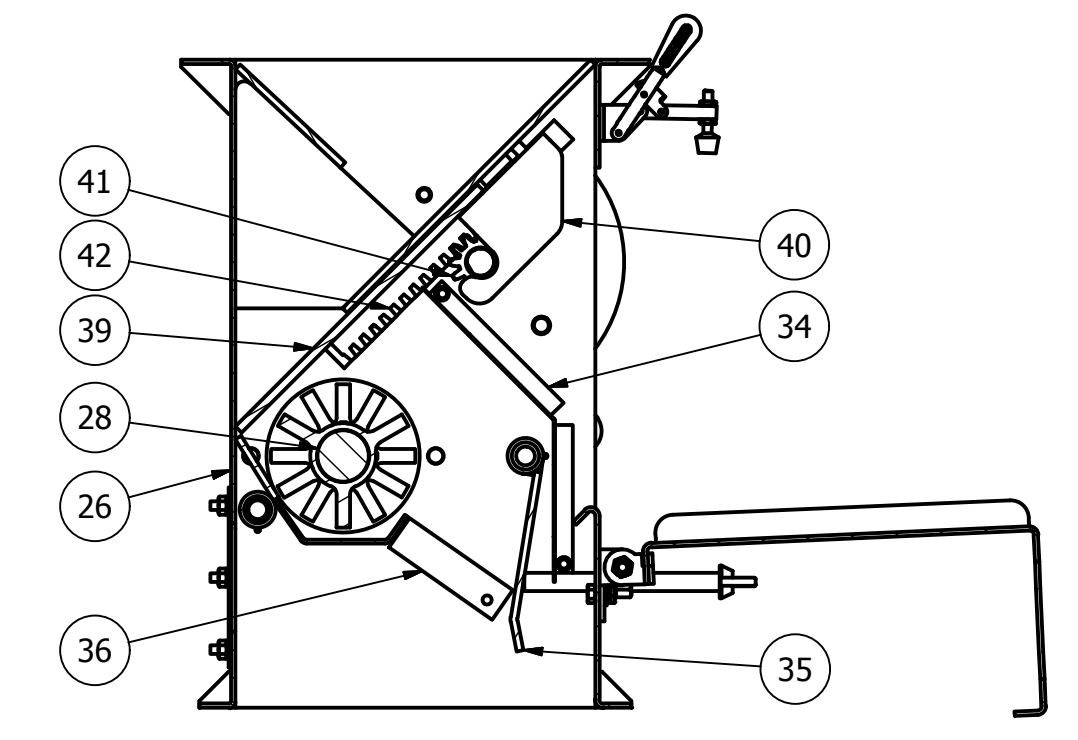
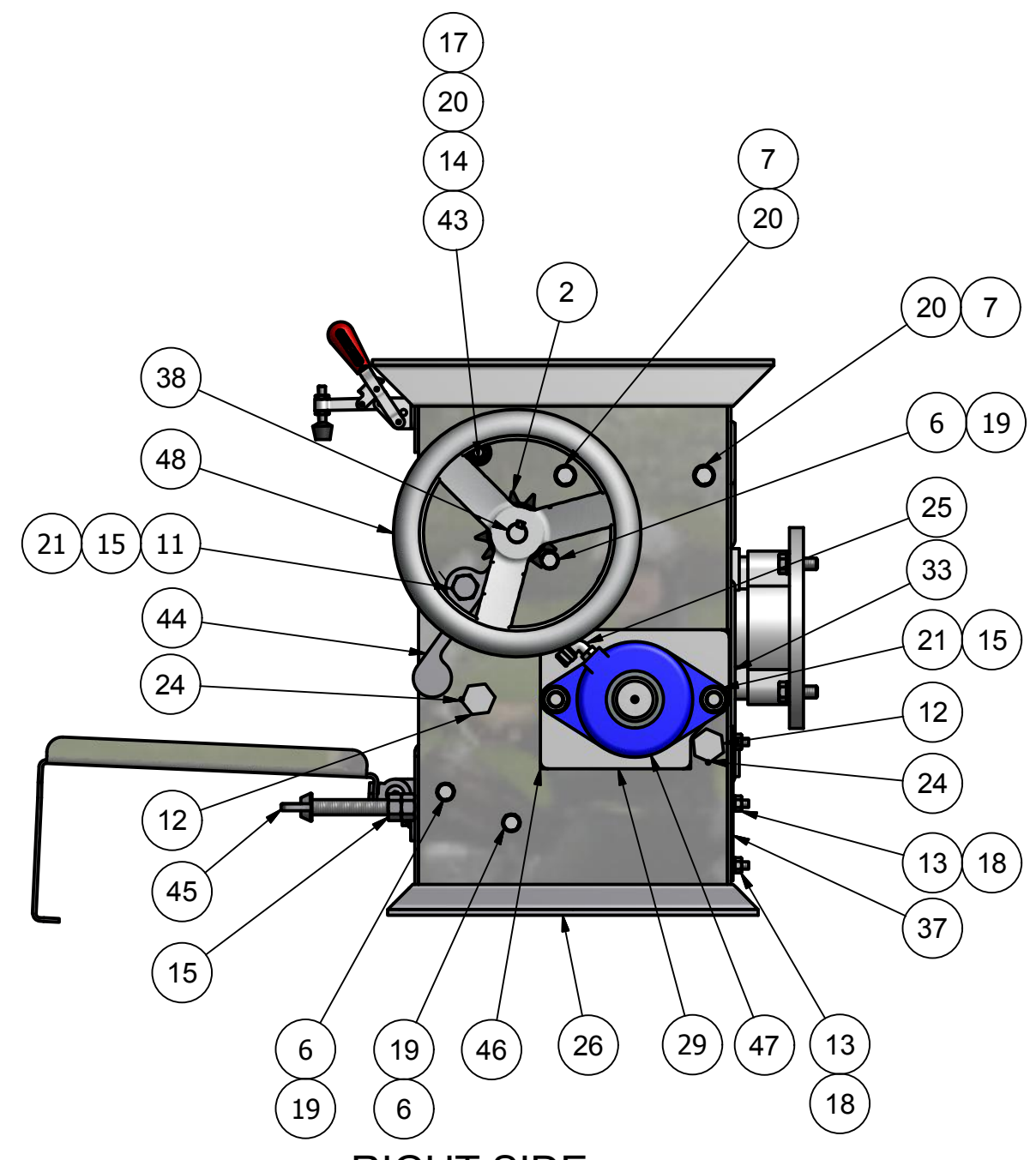


| REV | ECN | DESCRIPTION | DATE | APPROVED |
|-----|---------|--|------------|-----------|
| A | K050006 | RELEASE | 5/26/2005 | dmjohnson |
| B | K070089 | ADD K200-07355(1), DELETE K100-02030 & NOTE AS OPTION | 6/5/2007 | dmjohnson |
| C | K070128 | ADD K200-07359 | 8/22/2007 | agager |
| D | K070128 | UPDATED TO REFLECT CHGS TO COMPONENT PARTS, K908-11913 WAS F01102002 | 9/10/2007 | agager |
| E | K070128 | ADD K200-07418, DELETE K200-07417 | 9/19/2007 | agager |
| F | K070144 | UPDATED TO REFLECT CHANGES TO HINGE DESIGN | 9/28/2007 | agager |
| G | K070147 | 70004501 LATCH WAS 70004502 LATCH | 12/20/2007 | pggalea |
| H | K090076 | K100-03244 & -45 WAS K200-07415 & -07355, DELETE 70004501, K200-07415 & K200-11050, 67253800 WAS 4 PCS, ADD 67103300 | 5/11/2009 | dmjohnson |
| J | K100093 | 40002617 WAS 40002612, DEL 67053815(4), 6X 67053817 WAS 2X, 10X 67104400 WAS 8X | 10/8/2010 | dmjohnson |
| K | K110107 | Delete jam nut (66107100), replace hand wheel (K905-00103), & add keys (1ea 49020420 & 2ea 49020816) | 5/24/2011 | jmosh |
| L | K110166 | UPDATED ASSEMBLY | 7/21/2011 | SH |

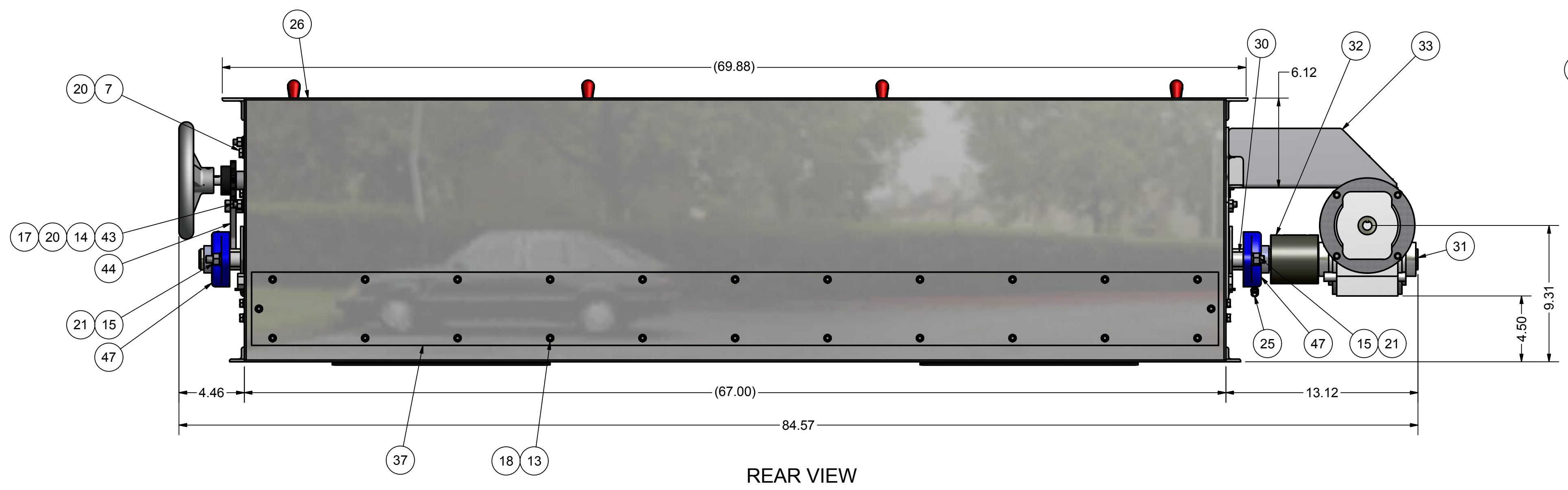
SECTION VIEW A-A



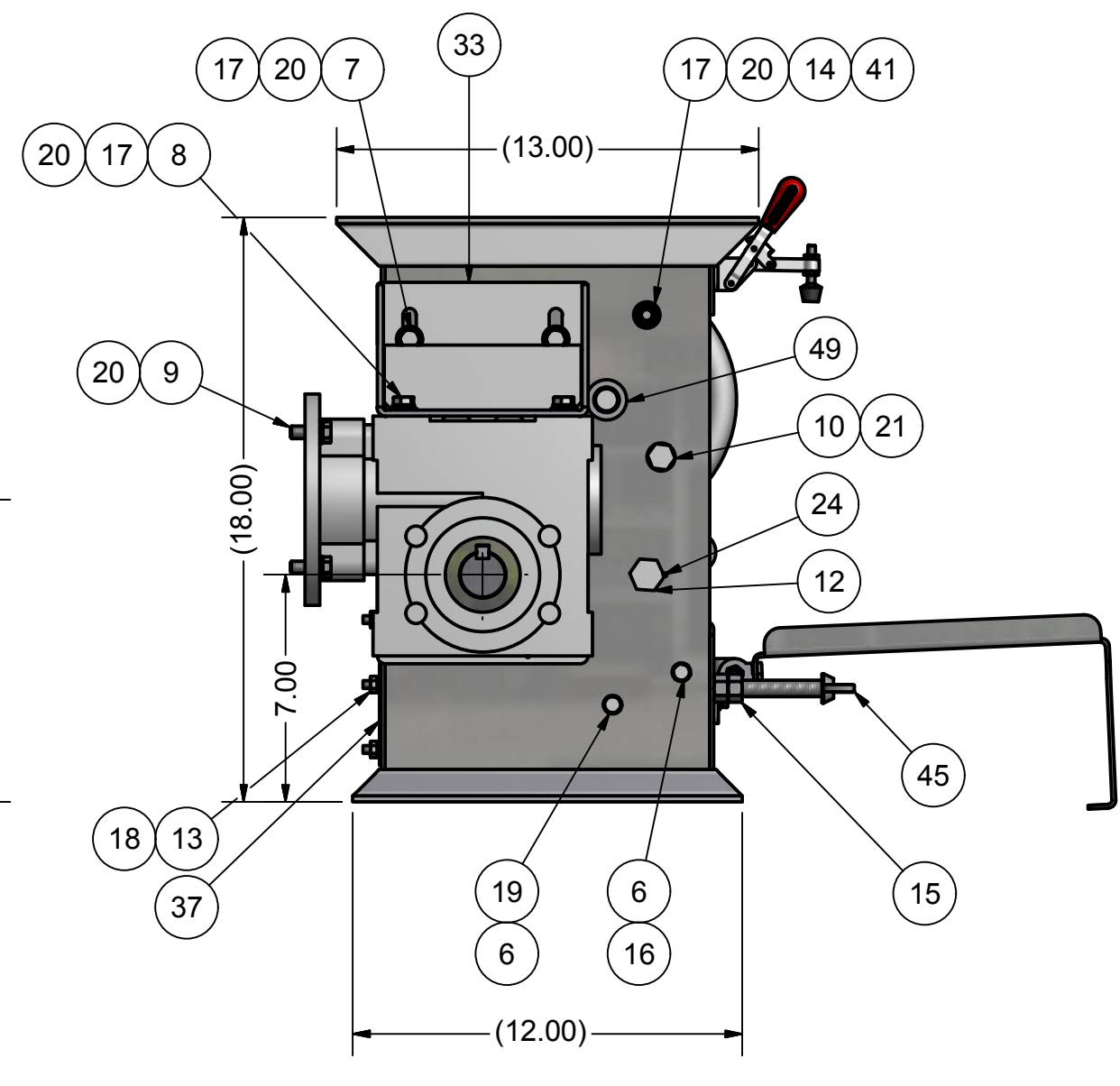
FRONT VIEW



RIGHT SIDE



REAR VIEW



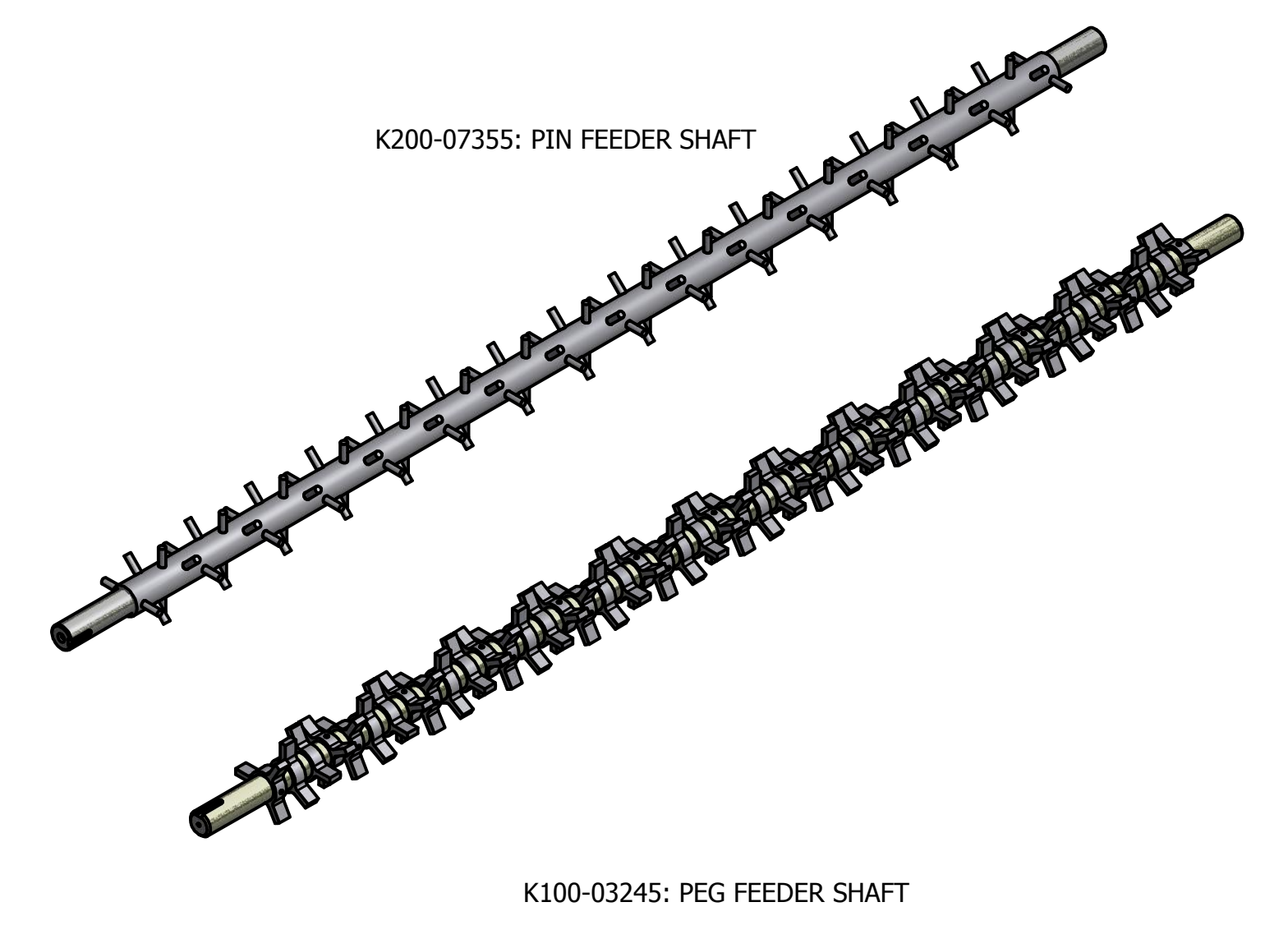
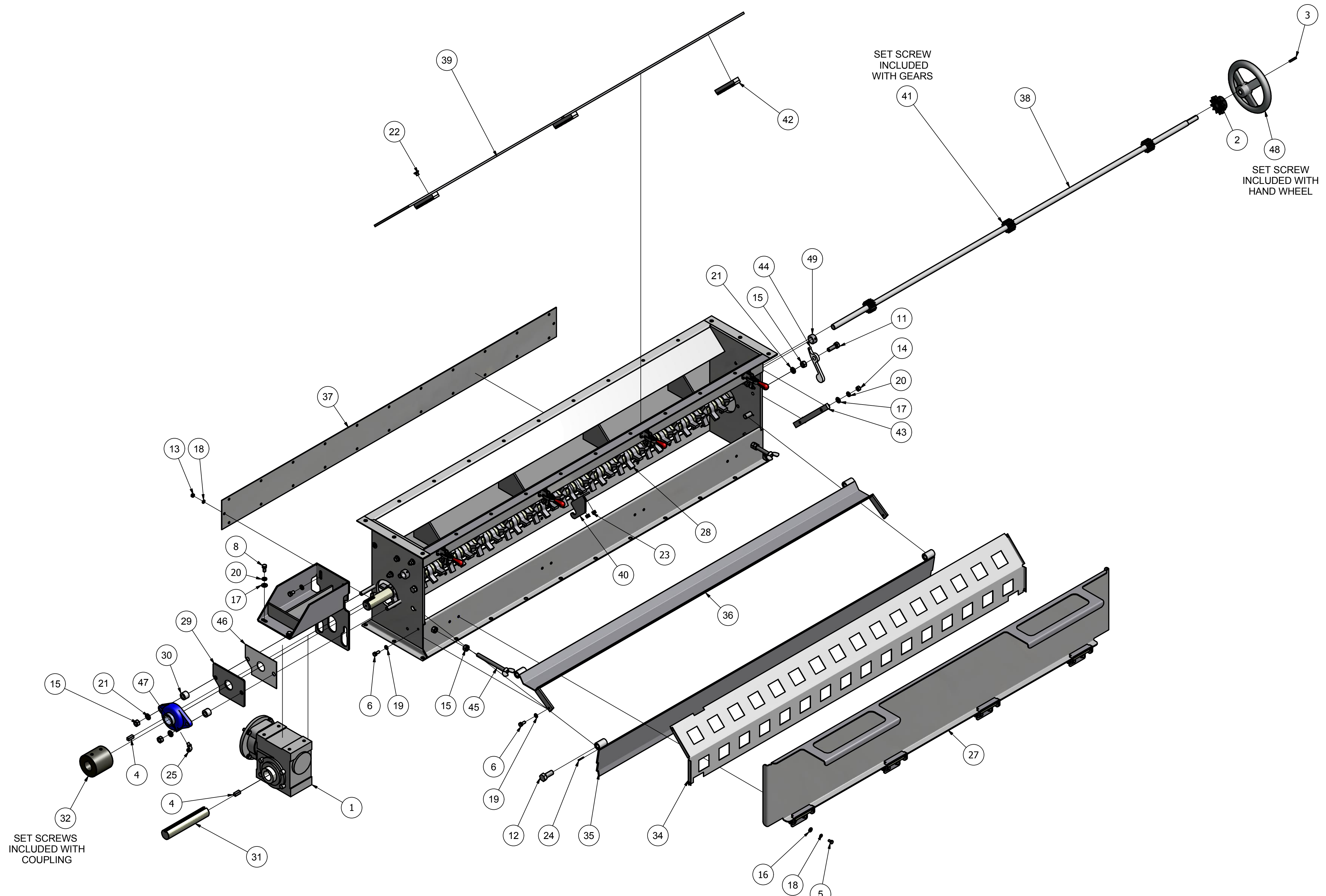
LEFT SIDE

| | | | |
|----|------------|----|---|
| 49 | K908-11913 | 4 | COLLAR, LOCK 303SS 20mm X 31.8 mm X 14 mm |
| 48 | K905-00103 | 1 | HANDWHEEL, AL, 8" OD .625 ID W/ SET SCREW |
| 47 | K902-04601 | 2 | BRNG, FLANGE 2 HOLE, 1.438" |
| 46 | K201-05351 | 2 | SEAL, DUST, BEARING SPACER, FEED ROLL |
| 45 | K200-11006 | 2 | SCREW WLDMT, DEFLECTOR ADJ, PIN FEEDER |
| 44 | K200-11004 | 1 | LATCH, SLIDE GATE, PIN FEEDER |
| 43 | K200-10384 | 2 | GUIDE WLDMT, SLIDE GATE, PIN FDR |
| 42 | K200-10383 | 3 | RACK, GEAR 5" SLIDE GATE, PIN FDR |
| 41 | K200-10381 | 3 | GEAR, PINION, 8P 12T 3/4" BORE |
| 40 | K200-07418 | 1 | SUPPORT, SLIDE GATE SHAFT |
| 39 | K200-07348 | 1 | GATE, SLIDE, PIN FEEDER, 68" |
| 38 | K200-07347 | 1 | SHAFT, SLIDE GATE, PIN FEEDER 32 X 68" |
| 37 | K200-07346 | 1 | COVER, STEAM VENT, PIN FEEDER, 32 X 68" |
| 36 | K200-07344 | 1 | TROUGH WLDMT, PIN FEEDER, 32 X 68" |
| 35 | K200-07342 | 1 | BAFFLE WLDMT, PIN FEEDER, 32 X 68" |
| 34 | K200-07341 | 1 | GUARD, PIN FEEDER, 32 X 68" |
| 33 | K200-06577 | 1 | REDUCER MOUNT WLDMT, PIN FEEDER 18/24" |
| 32 | K200-05898 | 1 | COUPLING, PIN FEEDER 18/20" |
| 31 | K200-05892 | 1 | SHAFT, COUPLING 1.438", PIN FEEDER |
| 30 | K200-00786 | 4 | SPACER, SS .75" PIN FEEDER |
| 29 | K200-00784 | 2 | SPACER, BEARING, FEED ROLL |
| 28 | K100-03245 | 1 | SHAFT WLDMT, PEG FEEDER, 68" |
| 27 | K100-03244 | 1 | DOOR WLDMT, PIN FEEDER, 68" |
| 26 | K100-03242 | 1 | HSG WLDMT, PIN FDR W/SLIDE GATE, 32 X 68" |
| 25 | 70012050 | 2 | CPLG, ELBOW 90 1/8-27M NPT X 1/4" TBG |
| 24 | 70008508 | 4 | PIN, ROLL 1/8 X 1.00" |
| 23 | 67253800 | 2 | NUT, HEX FLEXLOC 18-8 SS, 5/16-18 |
| 22 | 67184412 | 6 | FHCS, 18-8 SS 3/8-16 X 1/2" UNDERCUT |
| 21 | 67125200 | 6 | WASHER, LOCK HELICAL 18-8 SS, 1/2" |
| 20 | 67124400 | 16 | WASHER, LOCK HELICAL 18-8 SS 3/8" |
| 19 | 67123800 | 6 | WASHER, LOCK HELICAL 18-8 SS 5/16" |
| 18 | 67123300 | 32 | WASHER, LOCK HELICAL 18-8 SS 1/4" |
| 17 | 67104400 | 10 | WASHER, FLAT 18-8 SS TYPE A 3/8" |
| 16 | 67103300 | 8 | WASHER, FLAT 18-8 SS TYPE A 1/4" |
| 15 | 67065200 | 7 | NUT, HEX 18-8 SS 1/2-13 |
| 14 | 67064400 | 4 | NUT, HEX 18-8 SS 3/8-16 |
| 13 | 67063300 | 24 | NUT, HEX 18-8 SS, 1/4-20 |
| 12 | 67055828 | 4 | HHCS, 18-8 SS 5/8 -11 X 1.50" |
| 11 | 67055228 | 1 | HHCS, 18-8 SS 1/2-13 X 1.50" |
| 10 | 67055212 | 1 | HHCS, 18-8 SS 1/2-13 X 1/2" |
| 9 | 67054422 | 4 | HHCS, 18-8 SS 3/8-16 X 1.00" |
| 8 | 67054417 | 4 | HHCS, 18-8 SS 3/8-16 X 3/4" |
| 7 | 67054415 | 4 | HHCS, 18-8 SS 3/8-16 X 5/8" |
| 6 | 67053817 | 6 | HHCS, 18-8 SS 5/16-18 X 3/4" |
| 5 | 67053312 | 8 | HHCS, 18-8 SS 1/4-20 X 1/2" |
| 4 | 49020816 | 2 | KEY, SQUARE 18-8 SS 3/8 X 1.00 |
| 3 | 49020420 | 1 | KEY, SQUARE 18-8 SS 3/16 X 1.25" |
| 2 | 46141206 | 1 | SPRKT, 50BS12 X .75" |
| 1 | 40002617 | 1 | GEAR REDUCER, 10:1 56C/1750 |

- NOTES:
 1. DO NOT SCALE FROM DRAWING.
 2. ONE PIECE REQUIRED PER K000-06802: ROLLER MILL ASSY, DUAL DRIVE, 32 X 68" FL.
 3. MOTOR AND CONTROLLER NOT SHOWN OR IN BOM. WRITE AS LINE ITEMS ON SALE ORDER.
 4. * OPTIONAL FEEDER SHAFT, K200-07355: SHAFT WLDMT, PIN FEEDER, 68", NOT INCLUDED IN BILL OF MATERIAL. LINE ITEM ON SALES ORDER.

| | | | | | |
|--|--|---|--|---|--|
| | | DIVISION OF A.T. FERRELL COMPANY 1440 S ADAMS ST BLUFFTON, INDIANA 46714 - USA PH: 260-824-3400 FAX: 260-824-5463 | | This drawing is the property of the A. T. Ferrell Company, Inc. and must be returned immediately upon request. No part of this drawing may be reproduced, stored in a retrieval system or transmitted in any form or by any means, without prior written consent of the A. T. Ferrell Company, Inc. | |
| SINCE 1869 | | DRAWN BY: jmosh DRAWN DATE: 5/26/2005 APPROVED BY: DMJ | | TITLE: PIN FEEDER ASSY, REDUCER DRIVE, 32 X 68" | |
| TOLERANCES EXCEPT AS NOTED DECIMAL: ± .030 FRACTIONAL: ± 1/32 ANGULAR: ± 1/2° | | FINISH: NONE | | SCALE: 0.19:1 SHEET: 1 OF 2 SIZE: D PART NUMBER: K100-03241 REV: L | |

| REV | ECN | DESCRIPTION | DATE | APPROVED |
|-----|---------|--|------------|-----------|
| A | K050006 | RELEASE | 5/26/2005 | dmjohnson |
| B | K070089 | ADD K200-07355(1), DELETE K100-02030 & NOTE AS OPTION | 6/5/2007 | dmjohnson |
| C | K070128 | ADD K200-07359 | 8/22/2007 | agager |
| D | K070128 | UPDATED TO REFLECT CHGS TO COMPONENT PARTS, K908-11913 WAS F01102002 | 9/10/2007 | agager |
| E | K070128 | ADD K200-07418, DELETE K200-07417 | 9/19/2007 | agager |
| F | K070144 | UPDATED TO REFLECT CHANGES TO HINGE DESIGN | 9/28/2007 | agager |
| G | K070147 | 70004501 LATCH WAS 70004502 LATCH | 12/20/2007 | pggalea |
| H | K090076 | K100-03244 & -45 WAS K200-07415 & -07355, DELETE 70004501, K200-07415 & K200-11050, 67253800 WAS 4 PCS, ADD 67103300 | 5/11/2009 | dmjohnson |
| J | K100093 | 40002617 WAS 40002612, DEL 67053815(4), 6X 67053817 WAS 2X, 10X 67104400 WAS 8X | 10/8/2010 | dmjohnson |
| K | K110107 | Delete jam nut (66107100), replace hand wheel (K905-00103), & add keys (1ea 49020420 & 2ea 49020816) | 5/24/2011 | jmass |
| L | K110166 | UPDATED ASSEMBLY | 7/21/2011 | SH |



| ITEM | PART NUMBER | QTY | DESCRIPTION |
|------|-------------|-----|---|
| 40 | K200-07418 | 1 | SUPPORT, SLIDE GATE SHAFT |
| 49 | K908-11913 | 4 | COLLAR, LOCK 303SS 20mm X 31.8 mm X 14 mm |
| 48 | K905-00103 | 1 | HANDWHEEL, AL, 8" OD .625 ID W/ SET SCREW |
| 47 | K902-04601 | 2 | BRNG, FLANGE 2 HOLE, 1.438" |
| 46 | K201-05351 | 2 | SEAL, DUST, BEARING SPACER, FEED ROLL |
| 45 | K200-11006 | 2 | SCREW WLDMT, DEFLECTOR ADJ, PIN FEEDER |
| 44 | K200-11004 | 1 | LATCH, SLIDE GATE, PIN FEEDER |
| 43 | K200-10384 | 2 | GUIDE WLDMT, SLIDE GATE, PIN FDR |
| 42 | K200-10383 | 3 | RACK, GEAR 5" SLIDE GATE, PIN FDR |
| 41 | K200-10381 | 3 | GEAR, PINION, 8P 12T 3/4" BORE |
| 39 | K200-07348 | 1 | GATE, SLIDE, PIN FEEDER, 68" |
| 38 | K200-07347 | 1 | SHAFT, SLIDE GATE, PIN FEEDER 32 X 68" |
| 37 | K200-07346 | 1 | COVER, STEAM VENT, PIN FEEDER, 32 X 68" |
| 36 | K200-07344 | 1 | TROUGH WLDMT, PIN FEEDER, 32 X 68" |
| 35 | K200-07342 | 1 | BAFFLE WLDMT, PIN FEEDER, 32 X 68" |
| 34 | K200-07341 | 1 | GUARD, PIN FEEDER, 32 X 68" |
| 33 | K200-06577 | 1 | REDUCER MOUNT WLDMT, PIN FEEDER 18/24" |
| 32 | K200-05898 | 1 | COUPLING, PIN FEEDER 18/20" |
| 31 | K200-05892 | 1 | SHAFT, COUPLING 1.438", PIN FEEDER |
| 30 | K200-00786 | 4 | SPACER, SS .75" PIN FEEDER |
| 29 | K200-00784 | 2 | SPACER, BEARING, FEED ROLL |
| 28 | K100-03245 | 1 | SHAFT WLDMT, PEG FEEDER, 68" |
| 27 | K100-03244 | 1 | DOOR WLDMT, PIN FEEDER, 68" |
| 26 | K100-03242 | 1 | HSG WLDMT, PIN FDR W/SLIDE GATE, 32 X 68" |
| 25 | 70012050 | 2 | CPLG, ELBOW 90 1/8-27M NPT X 1/4" TBG |
| 24 | 70008508 | 4 | PIN, ROLL 1/8 X 1.00" |
| 23 | 67253800 | 2 | NUT, HEX FLEXLOC 18-8 SS, 5/16-18 |
| 22 | 67184412 | 6 | FHCS, 18-8 SS 3/8-16 X 1/2" UNDERCUT |
| 21 | 67125200 | 6 | WASHER, LOCK HELICAL 18-8 SS, 1/2" |
| 20 | 67124400 | 16 | WASHER, LOCK HELICAL 18-8 SS 3/8" |
| 19 | 67123800 | 6 | WASHER, LOCK HELICAL 18-8 SS 5/16" |
| 18 | 67123300 | 32 | WASHER, LOCK HELICAL 18-8 SS 1/4" |
| 17 | 67104400 | 10 | WASHER, FLAT 18-8 SS TYPE A 3/8" |
| 16 | 67103300 | 8 | WASHER, FLAT 18-8 SS TYPE A 1/4" |
| 15 | 67065200 | 7 | NUT, HEX 18-8 SS 1/2-13 |
| 14 | 67064400 | 4 | NUT, HEX 18-8 SS 3/8-16 |
| 13 | 67063300 | 24 | NUT, HEX 18-8 SS, 1/4-20 |
| 12 | 67055828 | 4 | HHCS, 18-8 SS 5/8 -11 X 1.50" |
| 11 | 67055228 | 1 | HHCS, 18-8 SS 1/2-13 X 1.50" |
| 10 | 67055212 | 1 | HHCS, 18-8 SS 1/2-13 X 1/2" |
| 9 | 67054422 | 4 | HHCS, 18-8 SS 3/8-16 X 1.00" |
| 8 | 67054417 | 4 | HHCS, 18-8 SS 3/8-16 X 3/4" |
| 7 | 67054415 | 4 | HHCS, 18-8 SS 3/8-16 X 5/8" |
| 6 | 67053817 | 6 | HHCS, 18-8 SS 5/16-18 X 3/4" |
| 5 | 67053312 | 8 | HHCS, 18-8 SS 1/4-20 X 1/2" |
| 4 | 49020816 | 2 | KEY, SQUARE 18-8 SS 3/8 X 1.00 |
| 3 | 49020420 | 1 | KEY, SQUARE 18-8 SS 3/16 X 1.25" |
| 2 | 46141206 | 1 | SPRKT, 50BS12 X .75" |
| 1 | 40002617 | 1 | GEAR REDUCER, 10:1 56C/1750 |

- NOTES:
 1. DO NOT SCALE FROM DRAWING.
 2. ONE PIECE REQUIRED PER K000-06802: ROLLER MILL ASSY, DUAL DRIVE, 32 X 68" FL.
 3. RIGHT SIDE SHAFT ASSY SHOWN, ASSEMBLE SHAFT AND DRIVE OPPOSITE FOR LEFT HAND SIDE.
 4. MOTOR AND CONTROLLER NOT SHOWN OR IN BOM. WRITE AS LINE ITEMS ON SALE ORDER.
 5. * OPTIONAL FEEDER SHAFT, K200-07355: SHAFT WLDMT, PIN FEEDER, 68", NOT INCLUDED IN BILL OF MATERIAL. LINE ITEM ON SALES ORDER.

| | | | | | |
|-----------------------|--|--|--|--|--|
| | | DIVISION OF A.T.FERRELL COMPANY 1440 S ADAMS ST BLUFFTON, INDIANA 46714 - USA PH: 260-824-3400 FAX: 260-824-5463 | | This drawing is the property of the A. T. Ferrell Company, Inc and must be returned immediately upon request. No part of this drawing may be reproduced, stored in a retrieval system or transmitted in any form or by any means, without prior written consent of the A. T. Ferrell Company, Inc. | |
| SINCE 1869 | | DRAWN BY: jmass DRAWN DATE: 5/26/2005 APPROVED BY: DMJ | | TOLERANCES EXCEPT AS NOTED: DECIMAL: FRACTIONAL: TITLE: XX ± .030 ± 1/32 PIN FEEDER ASSY, REDUCER DRIVE, 32 X 68" XXX ± .005 ANGULAR: ± 1/2" FINISH: XXXX ± .001 NONE | |
| CAD NO MANUAL CHANGES | | SCALE: 0.19:1 SHEET: 2 OF 2 SIZE: D PART NUMBER: K100-03241 | | REV: L | |