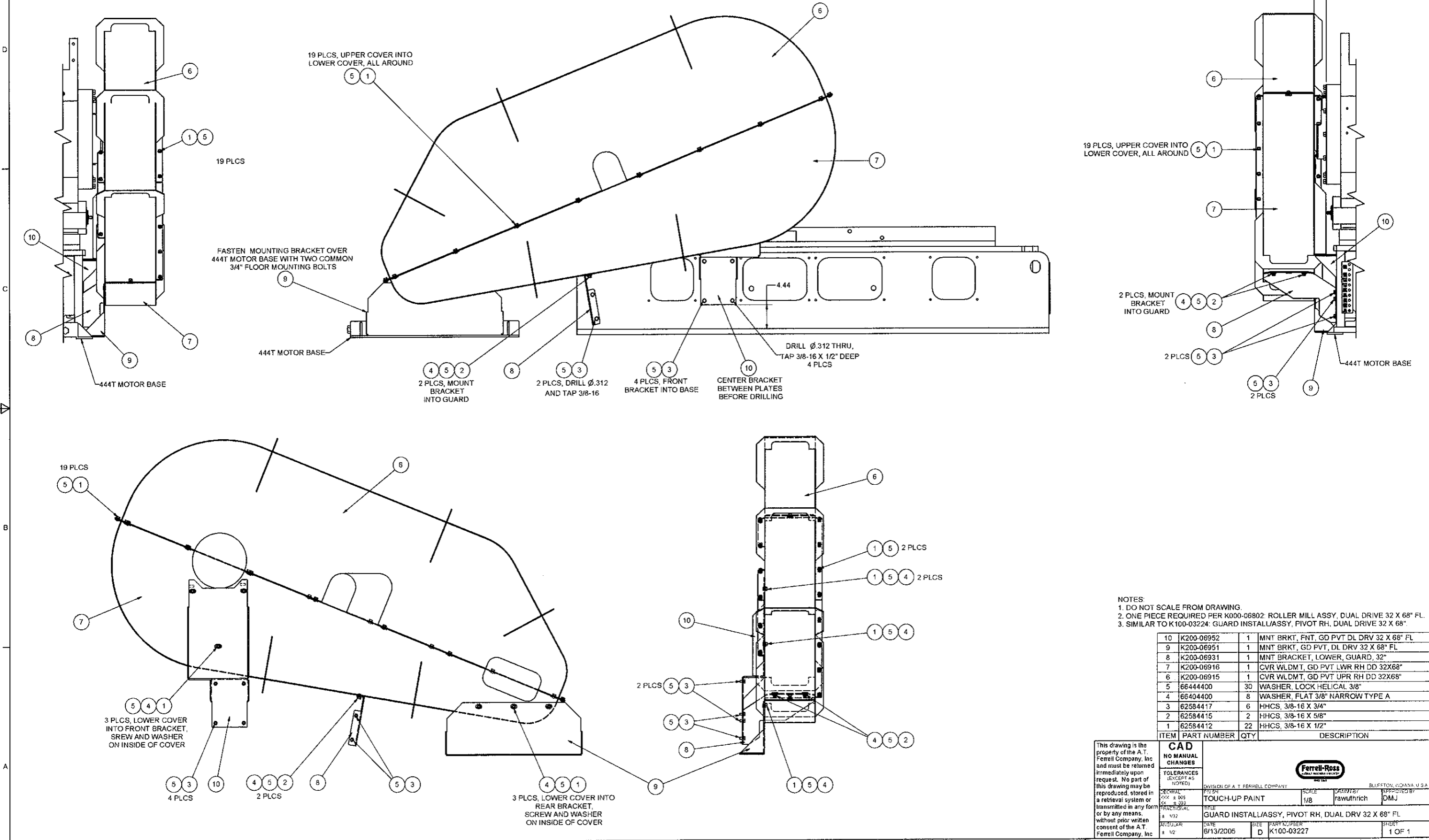


REVISION HISTORY				
REV	LTR	DESCRIPTION	DATE	APPROVED
-	K050006	RELEASE	6/14/2005	RAW



NOTES:
 1. DO NOT SCALE FROM DRAWING.
 2. ONE PIECE REQUIRED PER K000-06802: ROLLER MILL ASSY, DUAL DRIVE 32 X 68" FL.
 3. SIMILAR TO K100-03224: GUARD INSTALL/ASSY, PIVOT RH, DUAL DRIVE 32 X 68".

ITEM	PART NUMBER	QTY	DESCRIPTION
10	K200-06952	1	MNT BRKT, FNT, GD PVT DL DRV 32 X 68" FL
9	K200-06951	1	MNT BRKT, GD PVT, DL DRV 32 X 68" FL
8	K200-06931	1	MNT BRACKET, LOWER, GUARD, 32"
7	K200-06916	1	CVR WLDMT, GD PVT LWR RH DD 32X68"
6	K200-06915	1	CVR WLDMT, GD PVT UPR RH DD 32X68"
5	66444400	30	WASHER, LOCK HELICAL 3/8"
4	66404400	8	WASHER, FLAT 3/8" NARROW TYPE A
3	62584417	6	HHCS, 3/8-16 X 3/4"
2	62584415	2	HHCS, 3/8-16 X 5/8"
1	62584412	22	HHCS, 3/8-16 X 1/2"

This drawing is the property of the A.T. Ferrell Company, Inc. and must be returned immediately upon request. No part of this drawing may be reproduced, stored in a retrieval system or transmitted in any form or by any means, without prior written consent of the A.T. Ferrell Company, Inc.

CAD NO MANUAL CHANGES

TOLERANCES (EXCEPT AS NOTED)

FERRELL-ROSS

DIVISION OF A.T. FERRELL COMPANY

SCALE: 1/8" = 1"

DATE: 6/13/2005

SIZE: D

PART NUMBER: K100-03227

TITLE: GUARD INSTALL/ASSY, PIVOT RH, DUAL DRV 32 X 68" FL

DATE: 6/13/2005

SIZE: D

PART NUMBER: K100-03227

1 OF 1