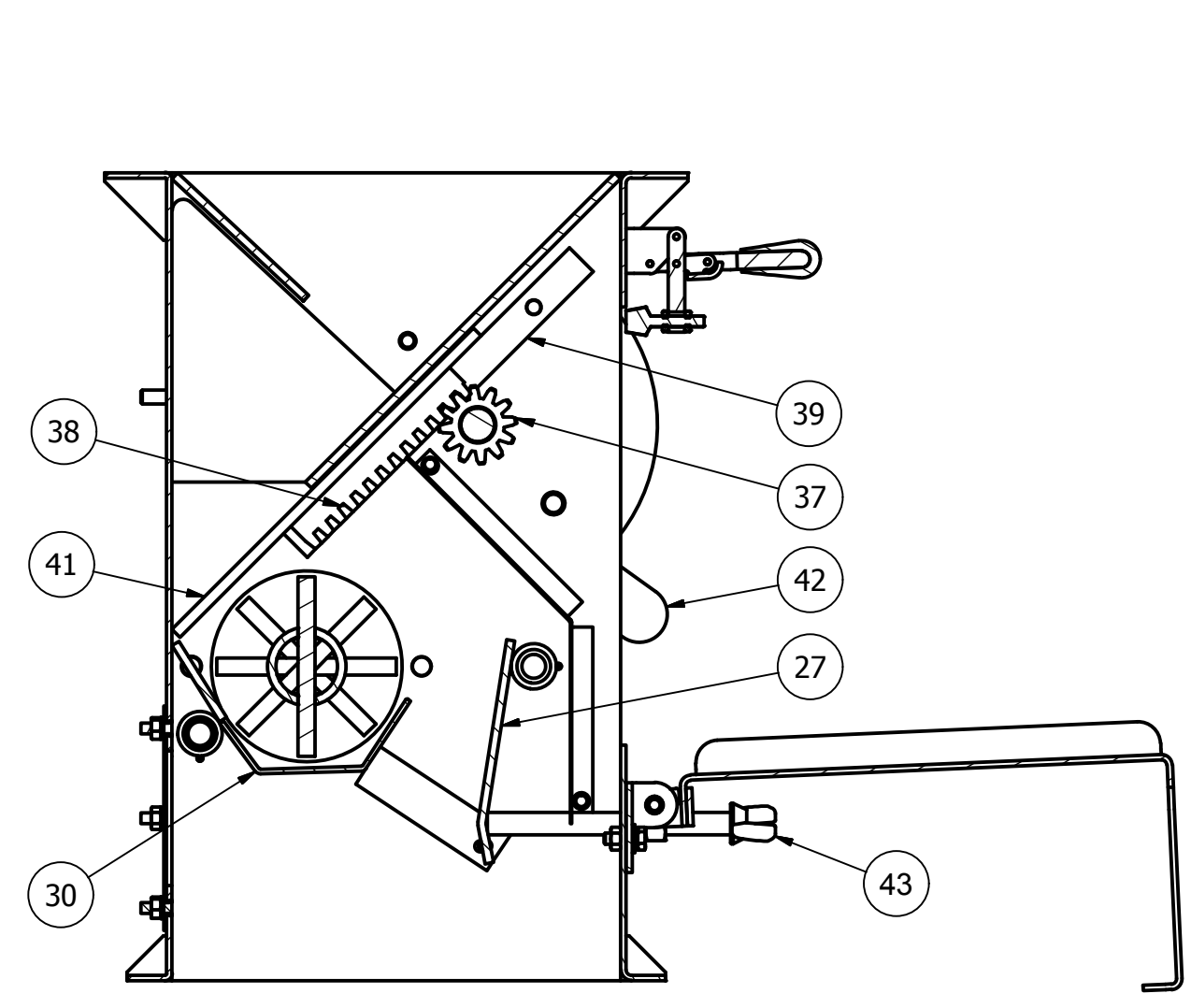
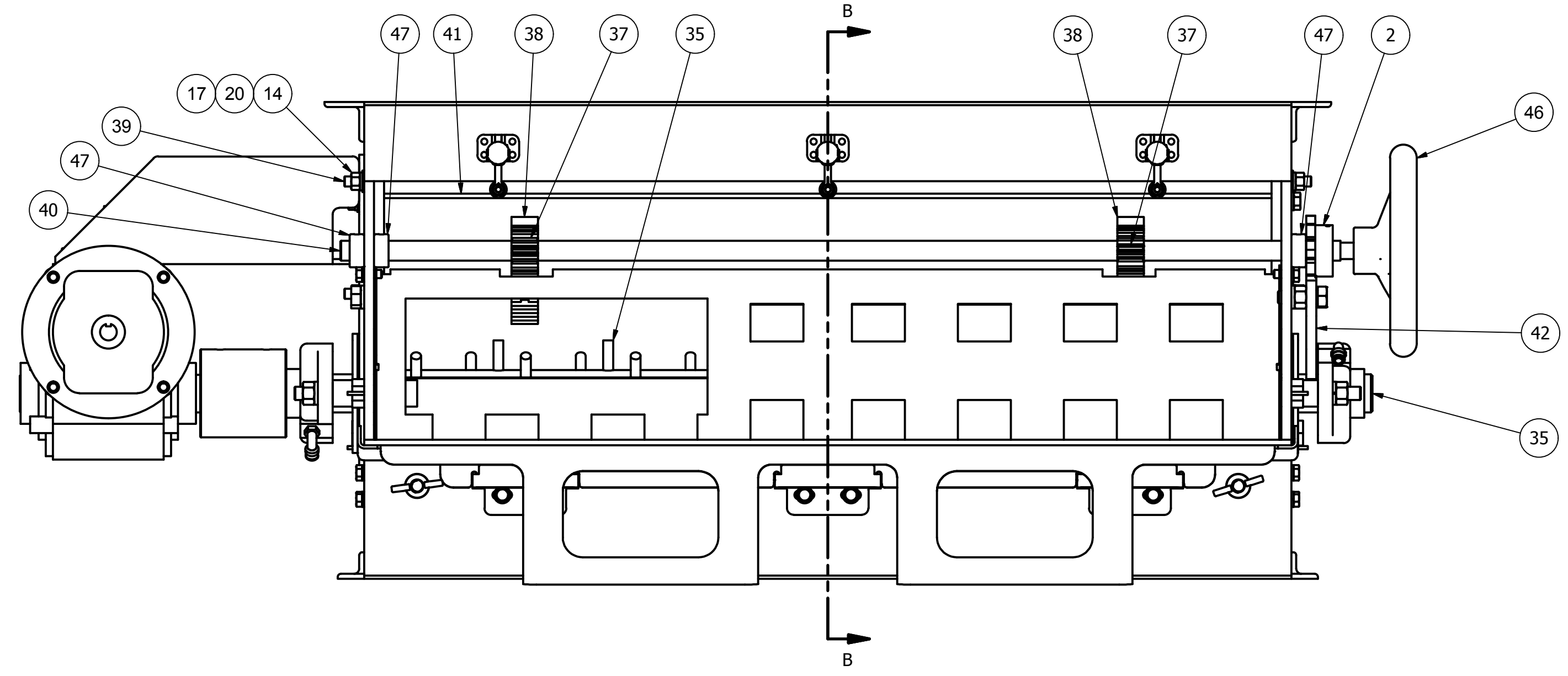


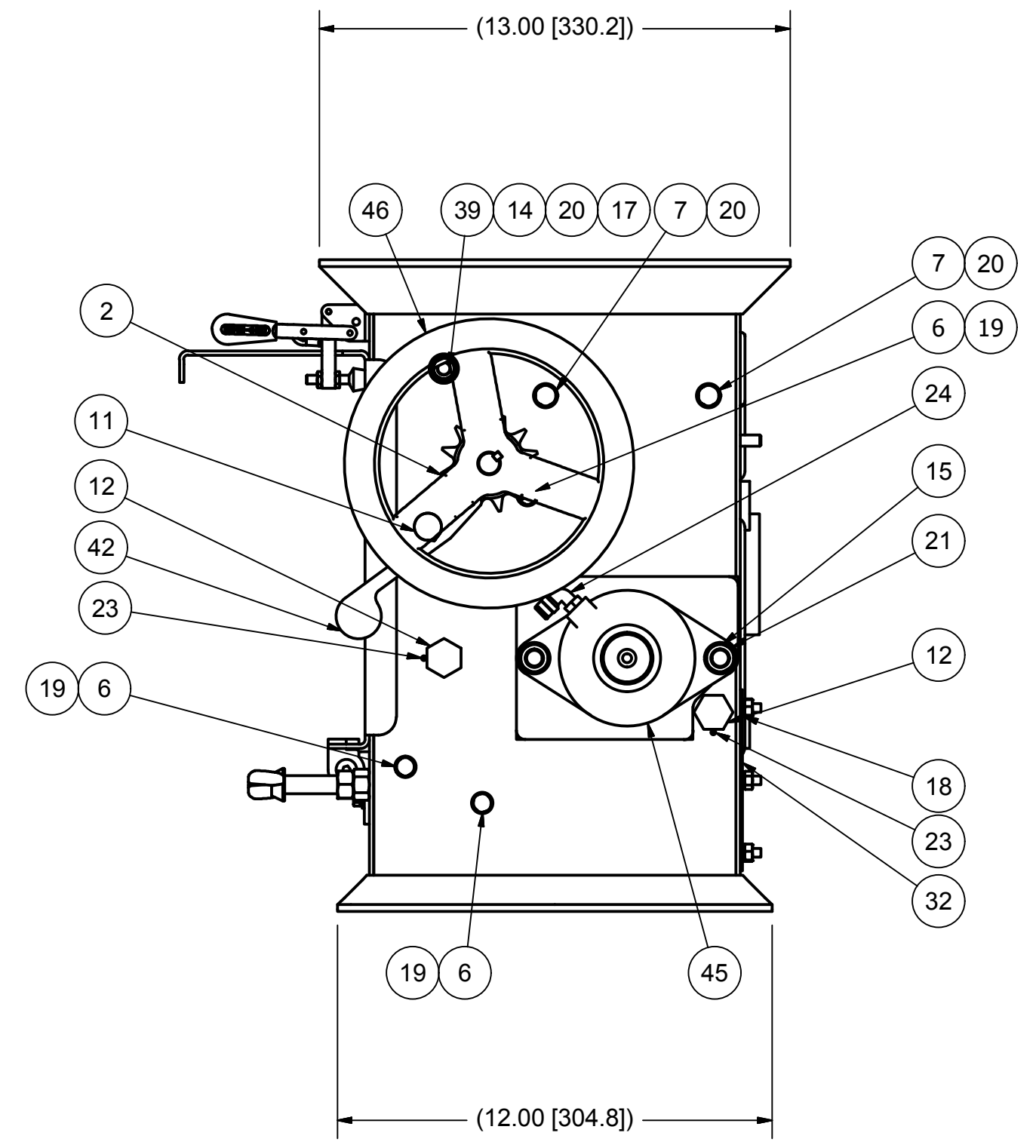
| REV | ECN | REVISION HISTORY | DATE | APPROVED |
|-----|---------|---|-----------|-----------|
| A | K010132 | RELEASE | 3/13/2002 | dmjohnson |
| B | K090157 | ADDED (2) 49020816, (6) 67103300, DEL (1) 70002011, REPLACED PART K100-02442 WAS K200-05308 & 67053317 WAS 67023312, CORRECTED QTY ON 67123300 & 67053317 | 6/4/2009 | SH |
| C | K100093 | 40002616 & K908-11913 WAS 40002612 & F01102002, DEL 67023815(4), 6X 67053817 WAS 2X, 10X 67104400 WAS 8X | 4/14/2010 | dmjohnson |
| D | K110107 | Delete jam nut (66107100), replace hand wheel (K905-00200) w/hand wheel (K905-00103), add key (49020420), & replace keys (49000816) w/keys (49020816) | 5/24/2011 | jmosse |



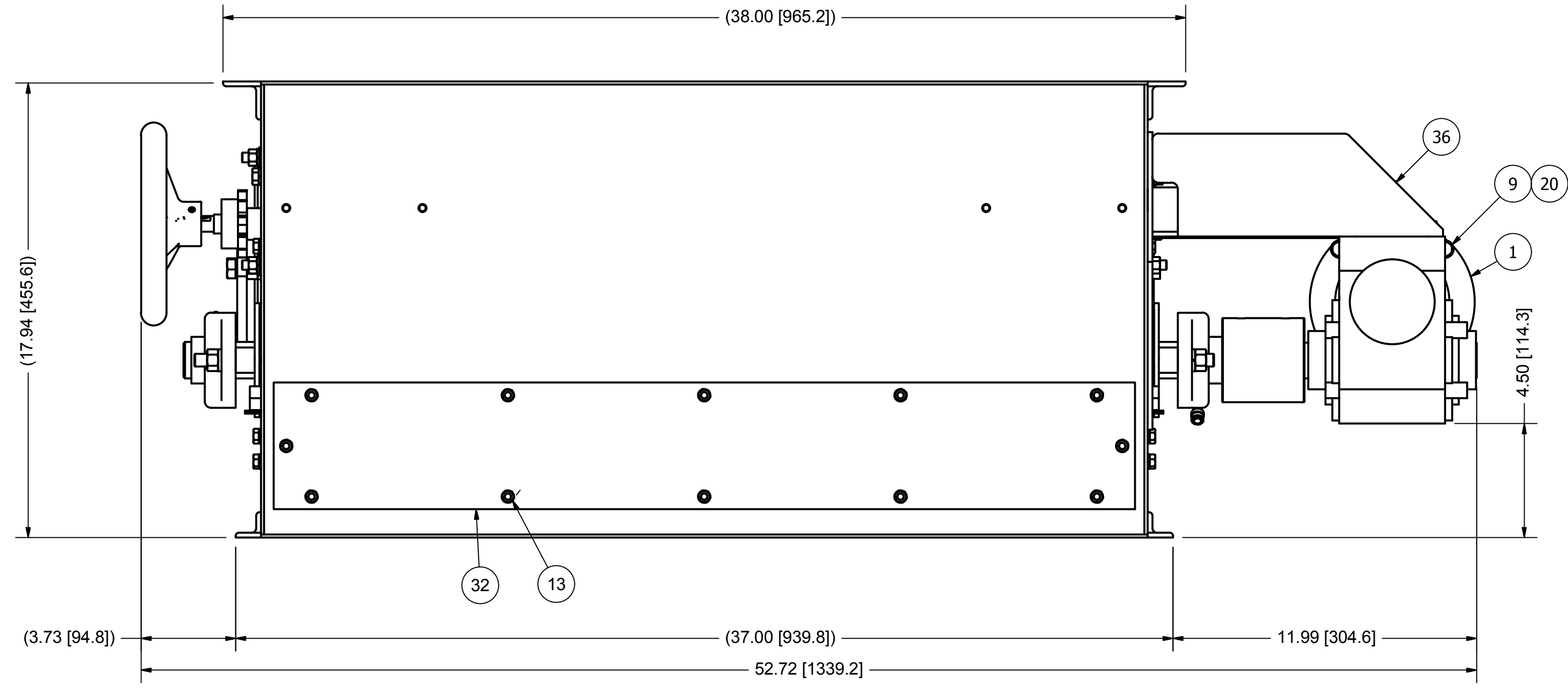
SECTION B-B
SCALE 1 / 4



FRONT VIEW



RIGHT SIDE



REAR VIEW

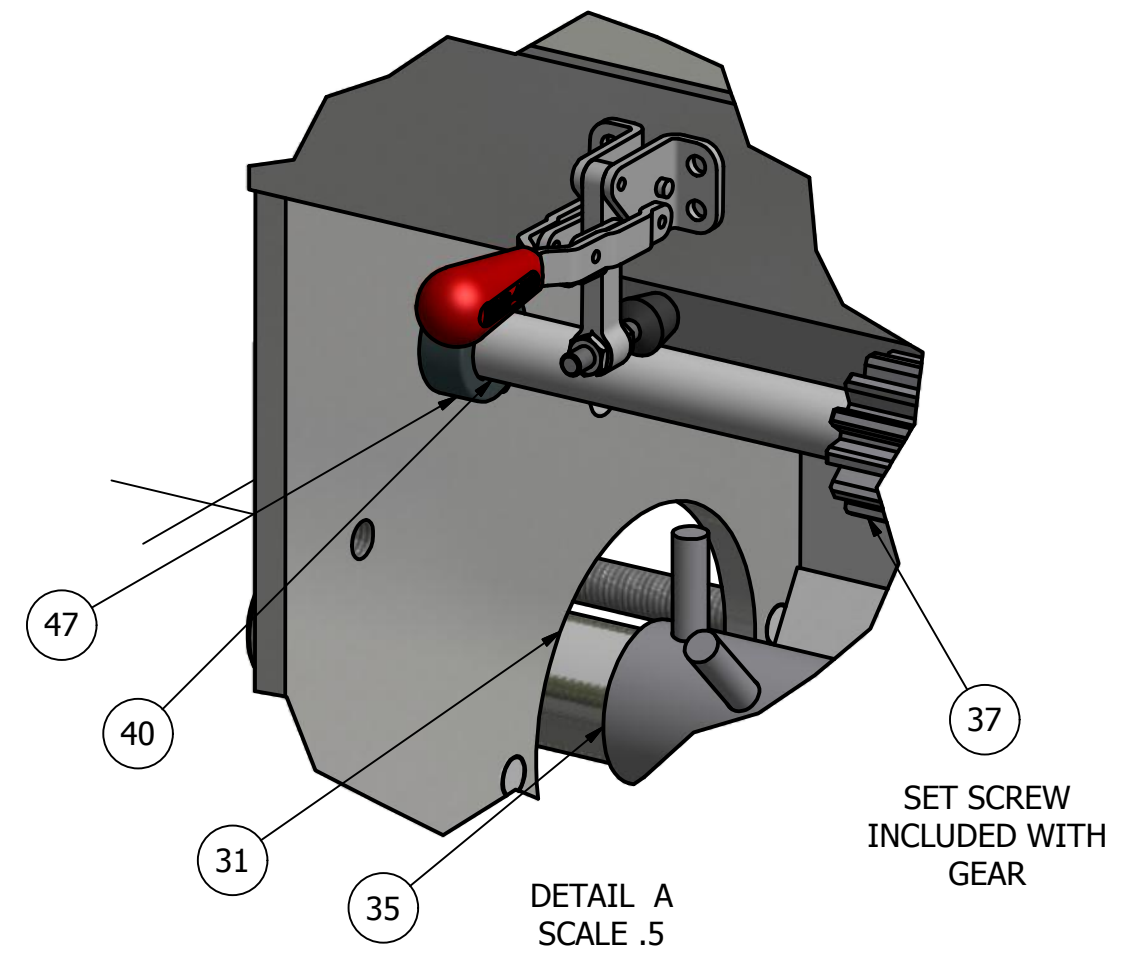
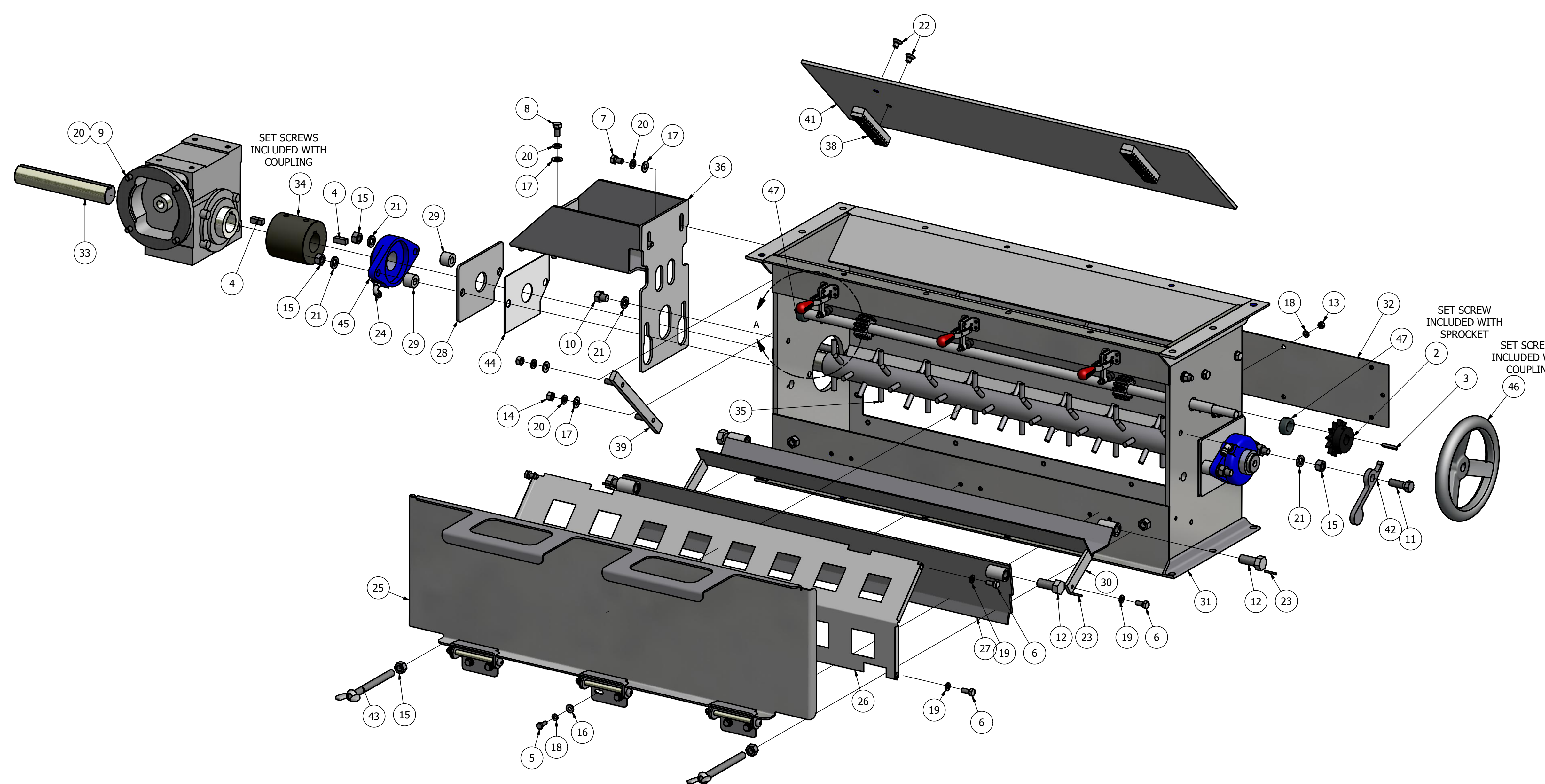
| ITEM | PART NUMBER | QTY | DESCRIPTION |
|------|-------------|-----|---|
| 47 | K908-11913 | 3 | COLLAR, LOCK 303SS 20mm X 31.8 mm X 14 mm |
| 46 | K905-00103 | 1 | HANDWHEEL, AL, 8" OD .625 ID W/ SET SCREW |
| 45 | K902-04601 | 2 | BRNG, FLANGE 2 HOLE, 1.438" |
| 44 | K201-05351 | 2 | SEAL, DUST, BEARING SPACER, FEED ROLL |
| 43 | K200-11006 | 2 | SCREW WLDMT, DEFLECTOR ADJ, PIN FEEDER |
| 42 | K200-11004 | 1 | LATCH, SLIDE GATE, PIN FEEDER |
| 41 | K200-10390 | 1 | GATE, SLIDE, PIN FEEDER 36" |
| 40 | K200-10386 | 1 | SHAFT, SLIDE GATE, PIN FEEDER 18 X 36" |
| 39 | K200-10384 | 2 | GUIDE WLDMT, SLIDE GATE, PIN FDR |
| 38 | K200-10383 | 2 | RACK, GEAR 5" SLIDE GATE, PIN FDR |
| 37 | K200-10381 | 2 | GEAR, PINION, 8P 12T 3/4" BORE |
| 36 | K200-06577 | 1 | REDUCER MOUNT WLDMT, PIN FEEDER 18/24" |
| 35 | K200-06575 | 1 | SHAFT WLDMT, PIN FEEDER, RDCR DRIVE, 36" |
| 34 | K200-05898 | 1 | COUPLING, PIN FEEDER 18/20" |
| 33 | K200-05892 | 1 | SHAFT, COUPLING 1.438", PIN FEEDER |
| 32 | K200-05287 | 1 | COVER, STEAM VENT, PIN FEEDER 18 X 36" |
| 31 | K200-01758 | 1 | HOUSING WLDMT, PIN FDR W/SLIDE GATE, 36" |
| 30 | K200-00868 | 1 | TROUGH WLDMT, PIN FEEDER SS 18 X 36" |
| 29 | K200-00786 | 4 | SPACER, SS .75" PIN FEEDER |
| 28 | K200-00784 | 2 | SPACER, BEARING, FEED ROLL |
| 27 | K200-00763 | 1 | BAFFLE WLDMT, PIN FEEDER, 18x36 |
| 26 | K200-00164 | 1 | GUARD, PIN FEEDER 18 X 36" |
| 25 | K100-02442 | 1 | DOOR WLDMT, FRONT FEEDER, 36" |
| 24 | 70012050 | 2 | CPLG, ELBOW 90 1/8-27M NPT X 1/4" TBG |
| 23 | 70008508 | 4 | PIN, ROLL 1/8 X 1.00" |
| 22 | 67184412 | 4 | FHCS, 18-8 SS 3/8-16 X 1/2" UNDERCUT |
| 21 | 67125200 | 6 | WASHER, LOCK HELICAL 18-8 SS, 1/2" |
| 20 | 67124400 | 16 | WASHER, LOCK HELICAL 18-8 SS 3/8" |
| 19 | 67123800 | 6 | WASHER, LOCK HELICAL 18-8 SS 5/16" |
| 18 | 67123300 | 18 | WASHER, LOCK HELICAL 18-8 SS 1/4" |
| 17 | 67104400 | 10 | WASHER, FLAT 18-8 SS TYPE A 3/8" |
| 16 | 67103300 | 6 | WASHER, FLAT 18-8 SS TYPE A 1/4" |
| 15 | 67065200 | 7 | NUT, HEX 18-8 SS 1/2-13 |
| 14 | 67064400 | 4 | NUT, HEX 18-8 SS 3/8-16 |
| 13 | 67063300 | 12 | NUT, HEX 18-8 SS, 1/4-20 |
| 12 | 67055828 | 4 | HHCS, 18-8 SS 5/8-11 X 1.50" |
| 11 | 67055228 | 1 | HHCS, 18-8 SS 1/2-13 X 1.50" |
| 10 | 67055212 | 1 | HHCS, 18-8 SS 1/2-13 X 1/2" |
| 9 | 67054422 | 4 | HHCS, 18-8 SS 3/8-16 X 1.00" |
| 8 | 67054417 | 4 | HHCS, 18-8 SS 3/8-16 X 3/4" |
| 7 | 67054415 | 4 | HHCS, 18-8 SS 3/8-16 X 5/8" |
| 6 | 67053817 | 6 | HHCS, 18-8 SS 5/16-18 X 3/4" |
| 5 | 67053317 | 6 | HHCS, 18-8 SS, 1/4-20 X .75" |
| 4 | 49020816 | 2 | KEY, SQUARE 18-8 SS 3/8 X 1.00 |
| 3 | 49020420 | 1 | KEY, SQUARE 18-8 SS 3/16 X 1.25" |
| 2 | 46141206 | 1 | SPRKT, 50BS12 X .75" |
| 1 | 40002616 | 1 | GEAR REDUCER, 15:1 56C/1750 |

NOTES:
 1. DO NOT SCALE FROM DRAWING.
 2. ONE PIECE REQUIRED PER K000-00184: ROLLER MILL ASSY, DUAL DRIVE 18 X 36".
 3. RH ASSY SHOWN, ASSEMBLE SHAFT & DRIVE OPPOSITE FOR LH MILL.
 4. 3/4 HP MOTOR & CONTROLLER NOT SHOWN OR IN BILL OF MATERIAL, WRITE AS LINE ITEMS ON SALES ORDER.
 5. ALTERNATIVE UNITS [X.X] IN MILLIMETERS.

| | | | | | | |
|--|---|--|------------------------------------|--|--|--|
| This drawing is the property of the A.T. Ferrell Company, Inc and must be returned immediately upon request. No part of this drawing may be reproduced, stored in a retrieval system or transmitted in any form or by any means, without prior written consent of the A.T. Ferrell Company, Inc. | CAD | | NO MANUAL CHANGES | | TOLERANCES EXCEPT AS NOTED | |
| | DECIMAL: .005 XX = .030 XX = .050 | | FINISH: NONE | | SCALE: 1:4 DIVISION OF A. T. FERRELL COMPANY SINCE 1869 BLUFFTON, INDIANA - USA | |
| | FRACTIONAL: +1/32 | | DATE: 6/1/2009 | | DRAWN BY: pggalea APPROVED BY: DMJ | |
| | ANGULAR: +1/2- | | SIZE: D PART NUMBER: K100-03056 | | TITLE: PIN FEEDER ASSY, REDUCER DRIVE 18 X 36" SHEET: 1 of 2 | |



| REV | ECN | REVISION HISTORY DESCRIPTION | DATE | APPROVED |
|-----|---------|---|-----------|-----------|
| A | K010132 | RELEASE | 3/13/2002 | dmjohnson |
| B | K090157 | ADDED (2) 49020816, (6) 67103300, DEL (1) 70002011, REPLACED PART K100-02442 WAS K200-05308 & 67053317 WAS 67023312, CORRECTED QTY ON 67123300 & 67053317 | 6/4/2009 | SH |
| C | K100093 | 40002616 & K908-11913 WAS 40002612 & F01102002, DEL 67023815(4), 6X 67053817 WAS 2X, 10X 67104400 WAS 8X | 4/14/2010 | dmjohnson |
| D | K110107 | Delete jam nut (66107100), replace hand wheel (K905-00200) w/hand wheel (K905-00103), add key (49020420), & replace keys (49000816) w/keys (49020816) | 5/24/2011 | jmosse |



| ITEM | PART NUMBER | QTY | DESCRIPTION |
|------|-------------|-----|---|
| 47 | K908-11913 | 3 | COLLAR, LOCK 303SS 20mm X 31.8 mm X 14 mm |
| 46 | K905-00103 | 1 | HANDWHEEL, AL, 8" OD .625 ID W/ SET SCREW |
| 45 | K902-04601 | 2 | BRNG, FLANGE 2 HOLE, 1.438" |
| 44 | K201-05351 | 2 | SEAL, DUST, BEARING SPACER, FEED ROLL |
| 43 | K200-11006 | 2 | SCREW WLDMT, DEFLECTOR ADJ, PIN FEEDER |
| 42 | K200-11004 | 1 | LATCH, SLIDE GATE, PIN FEEDER |
| 41 | K200-10390 | 1 | GATE, SLIDE, PIN FEEDER 36" |
| 40 | K200-10386 | 1 | SHAFT, SLIDE GATE, PIN FEEDER 18 X 36" |
| 39 | K200-10384 | 2 | GUIDE WLDMT, SLIDE GATE, PIN FDR |
| 38 | K200-10383 | 2 | RACK, GEAR 5" SLIDE GATE, PIN FDR |
| 37 | K200-10381 | 2 | GEAR, PINION, 8P 12T 3/4" BORE |
| 36 | K200-06577 | 1 | REDUCER MOUNT WLDMT, PIN FEEDER 18/24" |
| 35 | K200-06575 | 1 | SHAFT WLDMT, PIN FEEDER, ROCR DRIVE, 36" |
| 34 | K200-05898 | 1 | COUPLING, PIN FEEDER 18/20" |
| 33 | K200-05892 | 1 | SHAFT, COUPLING 1.438", PIN FEEDER |
| 32 | K200-05287 | 1 | COVER, STEAM VENT, PIN FEEDER 18 X 36" |
| 31 | K200-01758 | 1 | HOUSING WLDMT, PIN FDR W/SLIDE GATE, 36" |
| 30 | K200-00868 | 1 | TROUGH WLDMT, PIN FEEDER SS 18 X 36" |
| 29 | K200-00786 | 4 | SPACER, SS .75" PIN FEEDER |
| 28 | K200-00784 | 2 | SPACER, BEARING, FEED ROLL |
| 27 | K200-00763 | 1 | BAFFLE WLDMT, PIN FEEDER, 18x36 |
| 26 | K200-00164 | 1 | GUARD, PIN FEEDER 18 X 36" |
| 25 | K100-02442 | 1 | DOOR WLDMT, FRONT FEEDER, 36" |
| 24 | 70012050 | 2 | CPLG, ELBOW 90 1/8-27M NPT X 1/4" TBG |
| 23 | 70008508 | 4 | PIN, ROLL 1/8 X 1.00" |
| 22 | 67184412 | 4 | FHCS, 18-8 SS 3/8-16 X 1/2" UNDERCUT |
| 21 | 67125200 | 6 | WASHER, LOCK HELICAL 18-8 SS, 1/2" |
| 20 | 67124400 | 16 | WASHER, LOCK HELICAL 18-8 SS 3/8" |
| 19 | 67123800 | 6 | WASHER, LOCK HELICAL 18-8 SS 5/16" |
| 18 | 67123300 | 18 | WASHER, LOCK HELICAL 18-8 SS 1/4" |
| 17 | 67104400 | 10 | WASHER, FLAT 18-8 SS TYPE A 3/8" |
| 16 | 67103300 | 6 | WASHER, FLAT 18-8 SS TYPE A 1/4" |
| 15 | 67065200 | 7 | NUT, HEX 18-8 SS 1/2-13 |
| 14 | 67064400 | 4 | NUT, HEX 18-8 SS 3/8-16 |
| 13 | 67063300 | 12 | NUT, HEX 18-8 SS, 1/4-20 |
| 12 | 67055828 | 4 | HHCS, 18-8 SS 5/8 -11 X 1.50" |
| 11 | 67055228 | 1 | HHCS, 18-8 SS 1/2-13 X 1.50" |
| 10 | 67055212 | 1 | HHCS, 18-8 SS 1/2-13 X 1/2" |
| 9 | 67054422 | 4 | HHCS, 18-8 SS 3/8-16 X 1.00" |
| 8 | 67054417 | 4 | HHCS, 18-8 SS 3/8-16 X 3/4" |
| 7 | 67054415 | 4 | HHCS, 18-8 SS 3/8-16 X 5/8" |
| 6 | 67053817 | 6 | HHCS, 18-8 SS 5/16-18 X 3/4" |
| 5 | 67053317 | 6 | HHCS, 18-8 SS, 1/4-20 X .75" |
| 4 | 49020816 | 2 | KEY, SQUARE 18-8 SS 3/8 X 1.00 |
| 3 | 49020420 | 1 | KEY, SQUARE 18-8 SS 3/16 X 1.25" |
| 2 | 46141206 | 1 | SPRKT, 50BS12 X .75" |
| 1 | 40002616 | 1 | GEAR REDUCER, 15:1 56C/1750 |

NOTES:
 1. DO NOT SCALE FROM DRAWING.
 2. ONE PIECE REQUIRED PER K000-00184: ROLLER MILL ASSY, DUAL DRIVE 18 X 36".
 3. RH ASSY SHOWN, ASSEMBLE SHAFT & DRIVE OPPOSITE FOR LH MILL.
 4. 3/4 HP MOTOR & CONTROLLER NOT SHOWN OR IN BILL OF MATERIAL, WRITE AS LINE ITEMS ON SALES ORDER.
 5. ALTERNATIVE UNITS [X.X] IN MILLIMETERS.

This drawing is the property of the A.T. Ferrell Company, Inc and must be returned immediately upon request. No part of this drawing may be reproduced, stored in a retrieval system or transmitted in any form or by any means, without prior written consent of the A.T. Ferrell Company, Inc.

CAD
 NO MANUAL CHANGES
 TOLERANCES EXCEPT AS NOTED

NO MANUFACTURING CHANGES
 TOLERANCES EXCEPT AS NOTED

DECIMAL: .005
 .030 ± .030
 FRACTIONAL: 1/32 ± 1/32
 ANGULAR: ± 1/2°

FINISH: NONE
 SCALE: 1:4
 DRAWN BY: pagnalea
 APPROVED BY: DMJ

DIVISION OF A. T. FERRELL COMPANY SINCE 1869 BLUFFTON, INDIANA - USA

TITLE: PIN FEEDER ASSY, REDUCER DRIVE 18 X 36"
 DATE: 6/1/2009
 SIZE: D
 PART NUMBER: K100-03056
 SHEET: 2 of 2

K100-03056