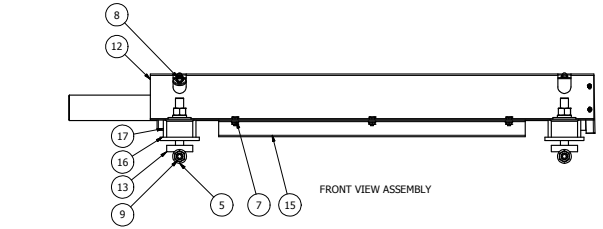
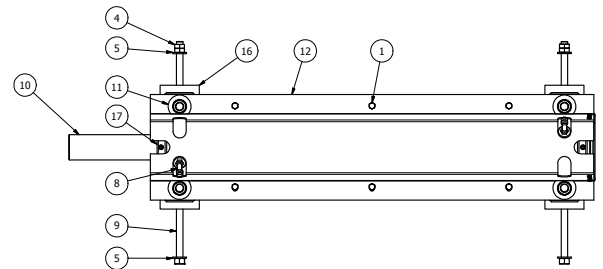
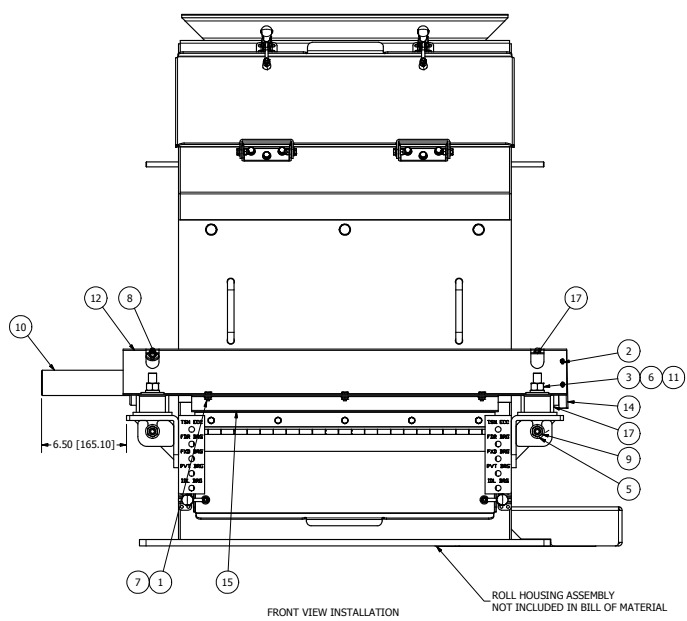
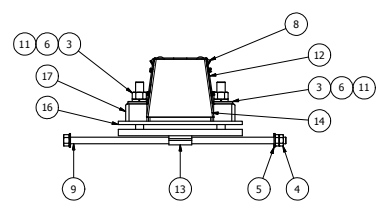
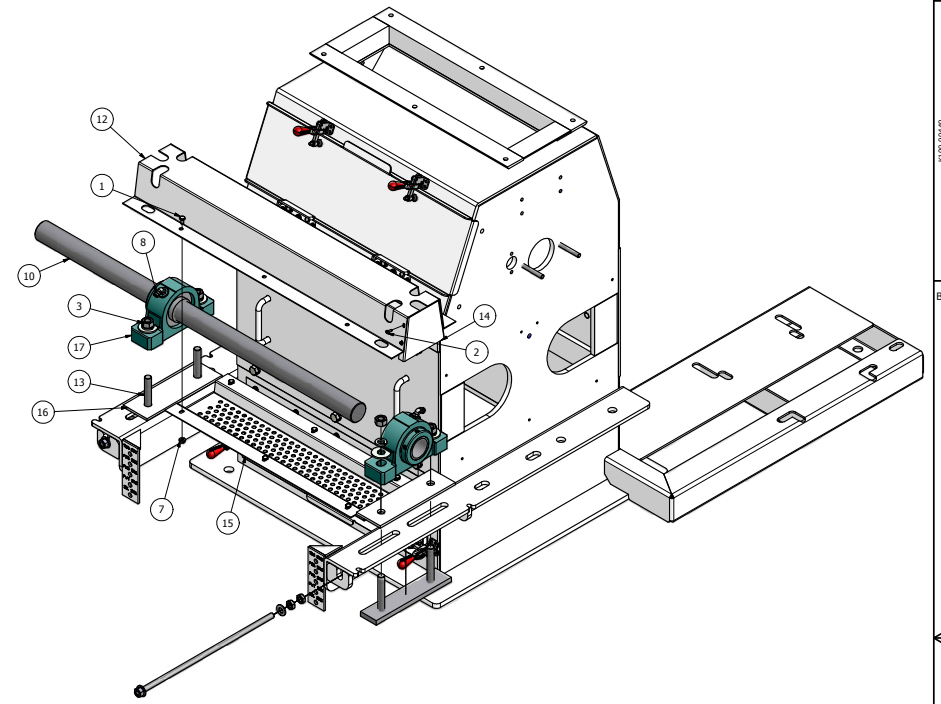


REV	ECN	DESCRIPTION	DATE	APPROVED
A	K990047	RELEASED	7/9/1999	AP
B	K080208	REDRAWN IN INVENTOR, WAS D-SIZE	2/3/2009	pggalea



NOTES:  
 1. DO NOT SCALE FROM DRAWING.  
 2. ONE PIECE REQUIRED PER K000-01233: ROLLER MILL ASSY, SINGLE HI, 10 X 24".  
 3. ONE PIECE REQUIRED PER K000-01238: ROLLER MILL ASSY, SINGLE HI, 10 X 24".  
 4. TWO PIECES REQUIRED PER K00-01252: ROLLER MILL ASSY, 2-HI 10 X 24".



ITEM	PART NUMBER	QTY	DESCRIPTION
17	K902-11301	2	BRNG, PB 2 HOLE 1.938"
16	K200-10884	2	SPACER, IDLER BEARING 10/12/18"
15	K200-10679	1	GUARD, BOTTOM, DIFF IDLER, 10 X 24"
14	K200-10655	1	END, GUARD, IDLER SHAFT 10/12"
13	K200-10580	2	SLIDE WLDMT, IDLER BEARING, 10-12"
12	K200-01673	1	GUARD, DIFF SHAFT, 10 X 24"
11	K200-01670	4	WASHER, FLAT SHEARED 5/8"
10	K200-00093	1	SHAFT, DIFFERENTIAL IDLER, 10 X 24"
9	K100-01413	2	SCREW WLDMT, IDLER BEARING, XHD 18"
8	70012050	2	CPLG, ELBOW 90 1/8-27M NPT X 1/4" TBG
7	66783300	6	NUT, HEX SERR LOCK 1/4-20
6	66445800	4	WASHER, LOCK HELICAL 5/8"
5	66405200	4	WASHER, FLAT 1/2" TYPE A
4	66105200	4	NUT, HEX JAM 1/2-13
3	66085800	4	NUT, HEX 5/8-11
2	65482212	4	SCW, MACH 8-32 X 1/2" HK SLT HD T/C
1	62583312	6	HMCS, 1/4-20 X 1/2"

This drawing is the property of the A.T. Ferrell Company, Inc. and must be returned immediately upon request. No part of this drawing may be reproduced, stored in a retrieval system or transmitted in any form or by any means, without prior written consent of the A.T. Ferrell Company, Inc.

<b>CAD</b> NO MANUAL CHANGES TOLERANCES EXCEPT AS NOTED	DIVISION OF A. T. FERRELL COMPANY	SCALE 0.21:1	DATE 1/29/2009	DRIVEN BY pggalea	APPROVED BY
TITLE IDLER ASSY, DIFFERENTIAL 1.5:1, 10 X 24"		PART NUMBER K100-00449		SHEET 1 of 1	