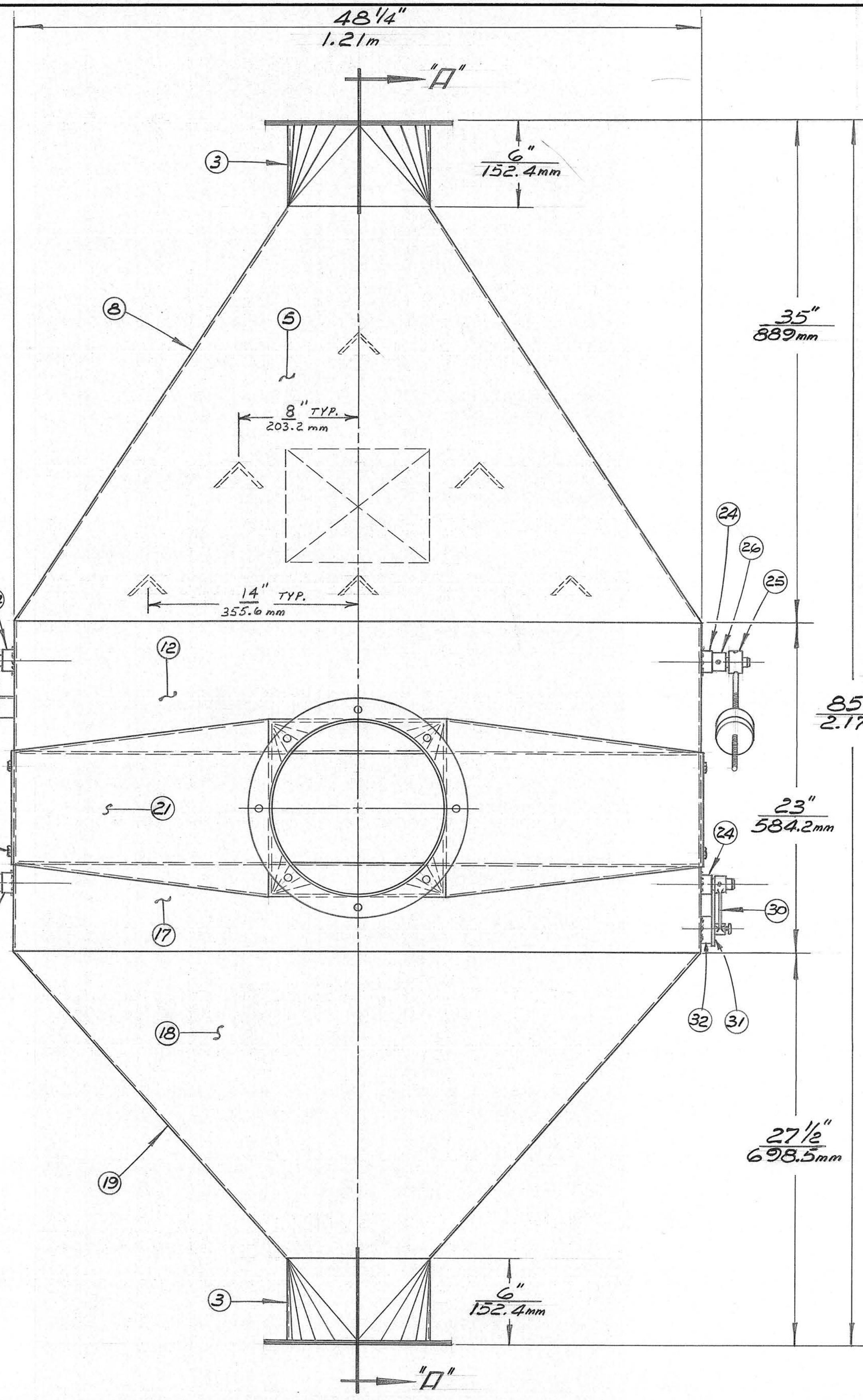
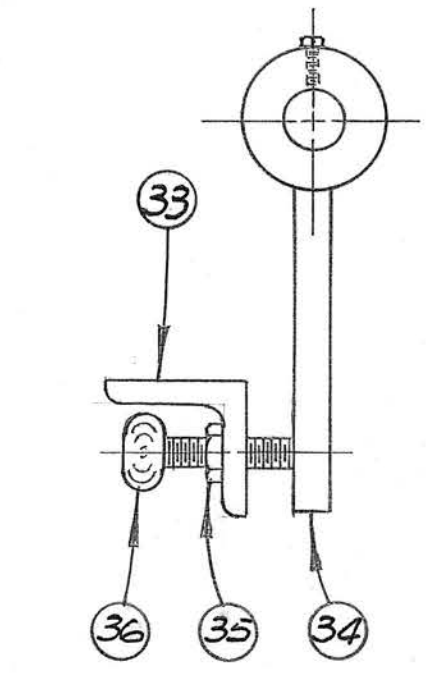


SECTION -AA



FRONT VIEW

BILL OF MATERIAL				
ITEM	REQ'D.	PART NO.	DESCRIPTION	
1	4	188-091A	Collar	
2	1	188-106A	Collar	
3	8	188-090A	Transition - 10 x 10 x 6	
4	4	188-114A	Transition - 12 x 12 x 6	
5	1	188-154A	Top - Front Section With Hole	
6	1	188-110A	Top - Back Section	
7	6	188-131A	Deflector	
8	2	188-155A	Side Top Section	
9	1	188-118A	Inspection Door	
10	2	188-133A	Side of Clipper Air Cleaner	
11	1	188-112A	Rain Hood Top	
12	1	188-156A	Middle of Clipper Air Cleaner	
13	1	188-157A	Deflector	
14	1	188-119A	Deflector Gate Assembly	
15	1	188-158A	Back of Clipper Air Cleaner	
16	1	188-115A	Back - Bottom Section	
17	1	188-159A	Front - Middle Section	
18	1	188-160A	Front - Bottom Section	
19	2	188-161A	Side - Bottom Section	
20	1	188-122A	Adjustable Valve Assembly	
21	2	188-162A	Side - Front Section	
22	2	188-163A	Bottom - Front Section	
23	1	188-124A	Valve Shaft - 5/4-1/4 Long	
24	4	188-072A	Bearing Collar	
25	1	188-082A	Weight Rod Assembly	
26	3	11-020A	Deflector Valve Collar	
27	1	188-126A	Valve Shaft - 51-3/4 Long	
28	1	208-002-1A	Counterweight - 1"	
29	1	208-002-2A	Counterweight - 5/8"	
30	1	10-009A	Adjusting Lever	
31	1	188-073A	Control Plate	
32	2	188-067A	Adjusting Lever Spacer	
33	1	188-077A	Deflector Valve Stop Angle	
34	1	188-066A	Deflector Stop Assembly	
35	1	826-10516	5/16"-18 Hex Hd. Nut	
36	1	834-30003	5/16"-18 x 1" Lg. Thumb Screw	
37	6	826-00010	1/4"-20 Hex Hd. Nut	
38	18	834-55601	5/16" x 1/2" Self Tapping Screw	
39	2	188-193A	TRANSITION FILLER	



DETAIL -B

NOTE -
CFM - 4650
FAN - 613
COLLECTOR - 54-10

WELDED CONSTRUCTION

MICROFILMED
 DATE AUG 24 1981

CHECKED
 By ⓪ Date 1/13/81

SYM.	REVISION	DATE	DR.						
	NPR F00100	1-3-84							

CLIPPER AIR CLEANER
ANGLE TYPE # 48

FERRELL - ROSS
 SAGINAW, MICH.
 DWG. NO. 001-14252 C

DWN. BY ⓪ SCALE 3/16"=1" DATE 1/12/81